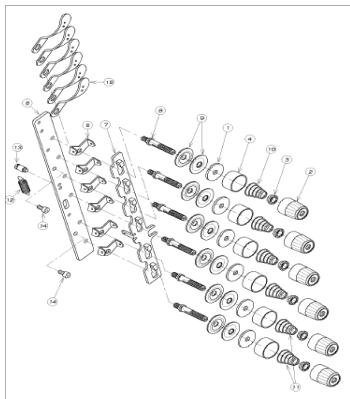


# Dual Stitch NR/NRE9803-WD, NW8803-WD

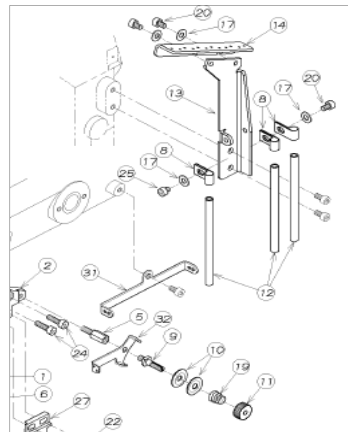
## General Points

### \* Additional parts

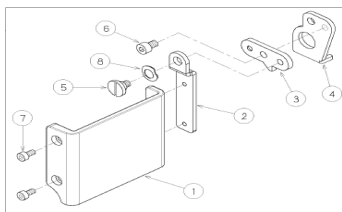
1) Thread tensions - 6 pcs.



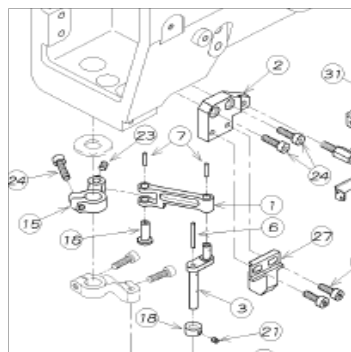
5) Exclusive Thread Eyelet



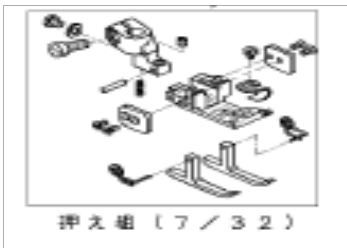
2) Eye Guard



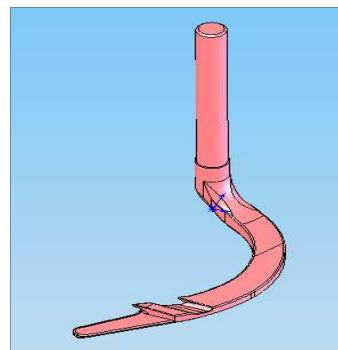
6) Exclusive Spreader mechanism



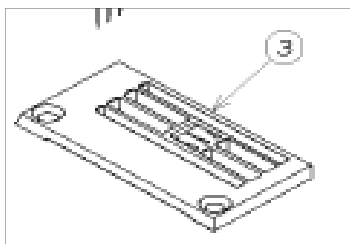
3) Exclusive Presser Foot



7) Exclusive Spreader Looper

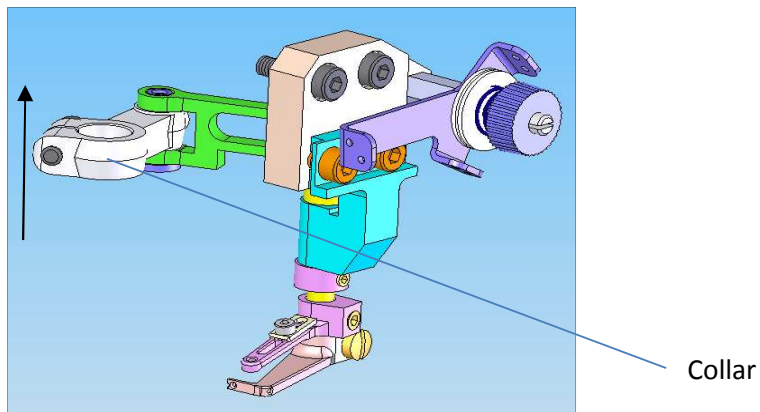


4) Short Stitch Needle Plate

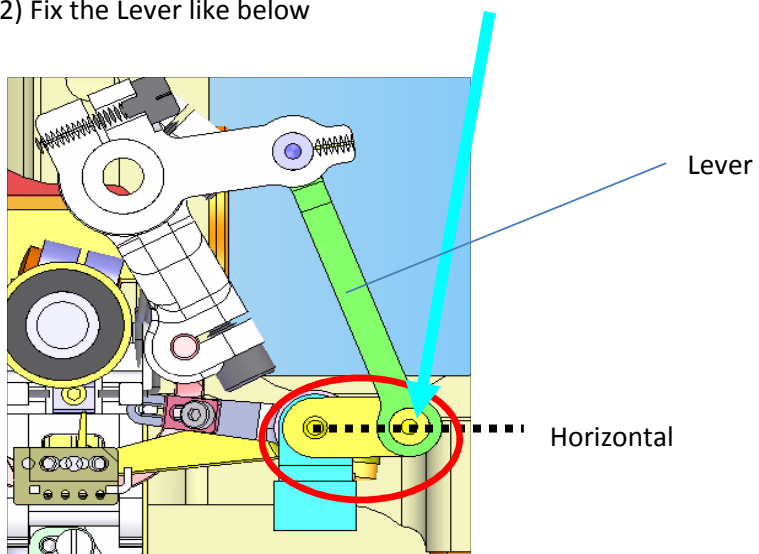


## \* About Spreader Mechanism

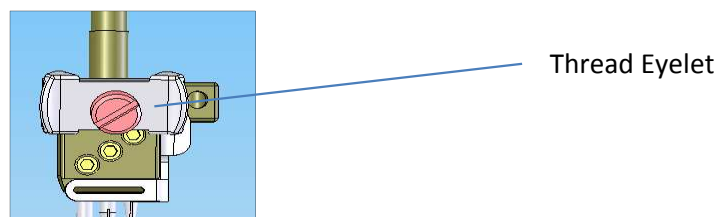
1) Change the Collar together with Washer



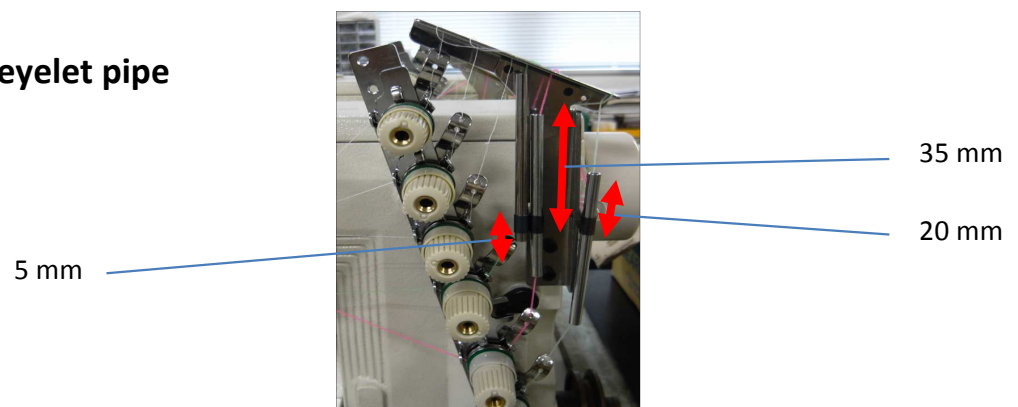
2) Fix the Lever like below



3) Move thread eyelet from needle clamp to machine head



## \* Position of thread eyelet pipe

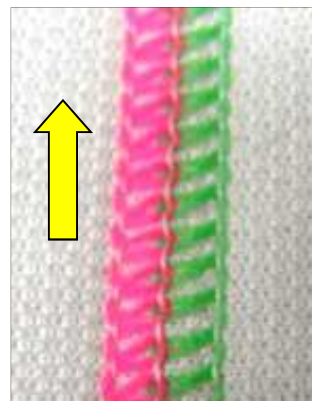


## Dual Stitch NR/NRE9803-WD, NW8803-WD

### Half & Half cover stitch

#### Procedure for modifying and adjusting

\* Use only **WOOLLY** thread.

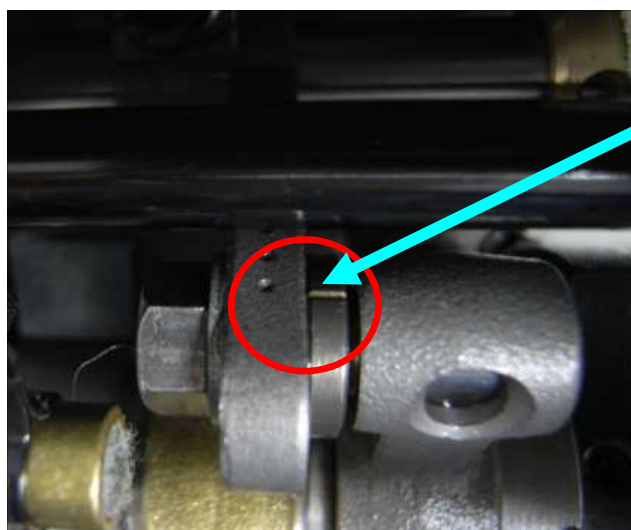


#### 1. TIMING POSITION OF SPREADER



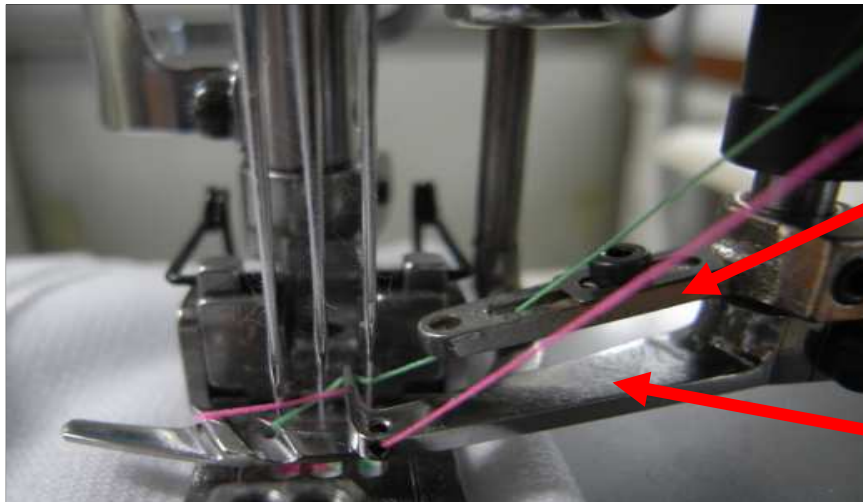
Adjust like this.  
It is necessary to micro-adjust  
during the checking of thread condition.

#### 2. POSITION OF LEVER OF THE SPREADER



Adjust like this

### 3. THREADING AND PARTS POSITION



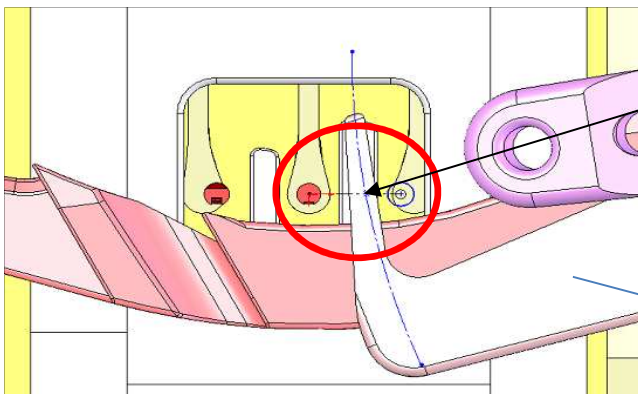
Spreader Eyelet Upper

Spreader Support Looper

### 4. POSITION OF SPREADER SUPPORT LOOPER

#### 4-1. Correct Position of Right to Left

Gauge : 7/32"

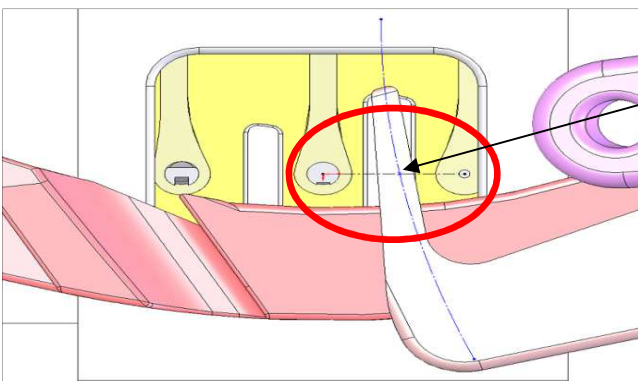


Adjust like this

1/3 closer to right needle between center needle and right needle.

Spreader Support Looper

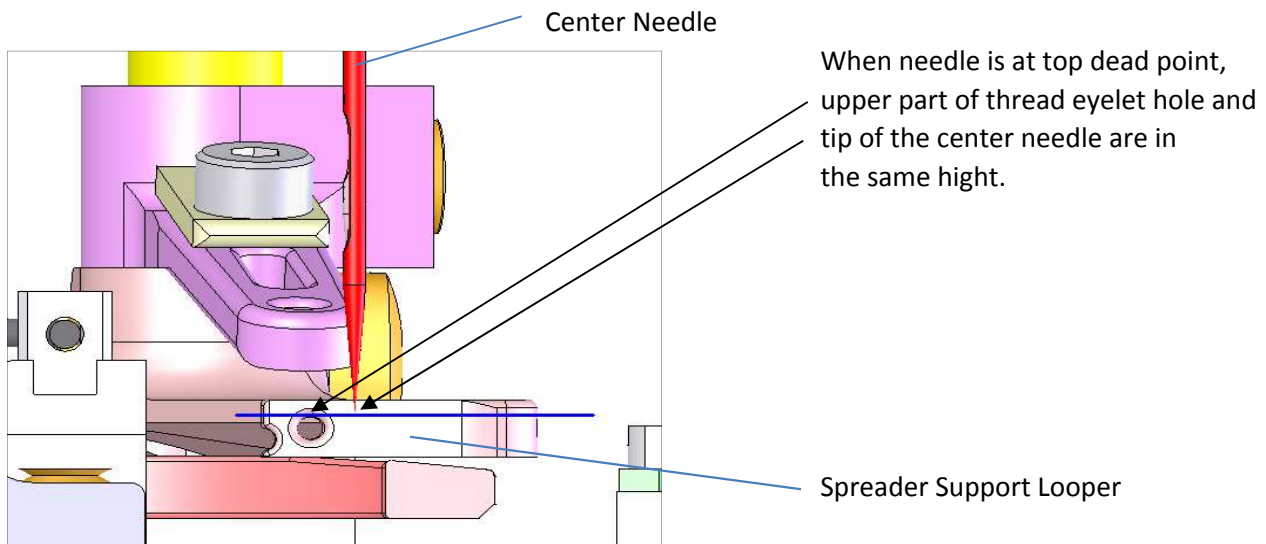
Gauge : 1/4"



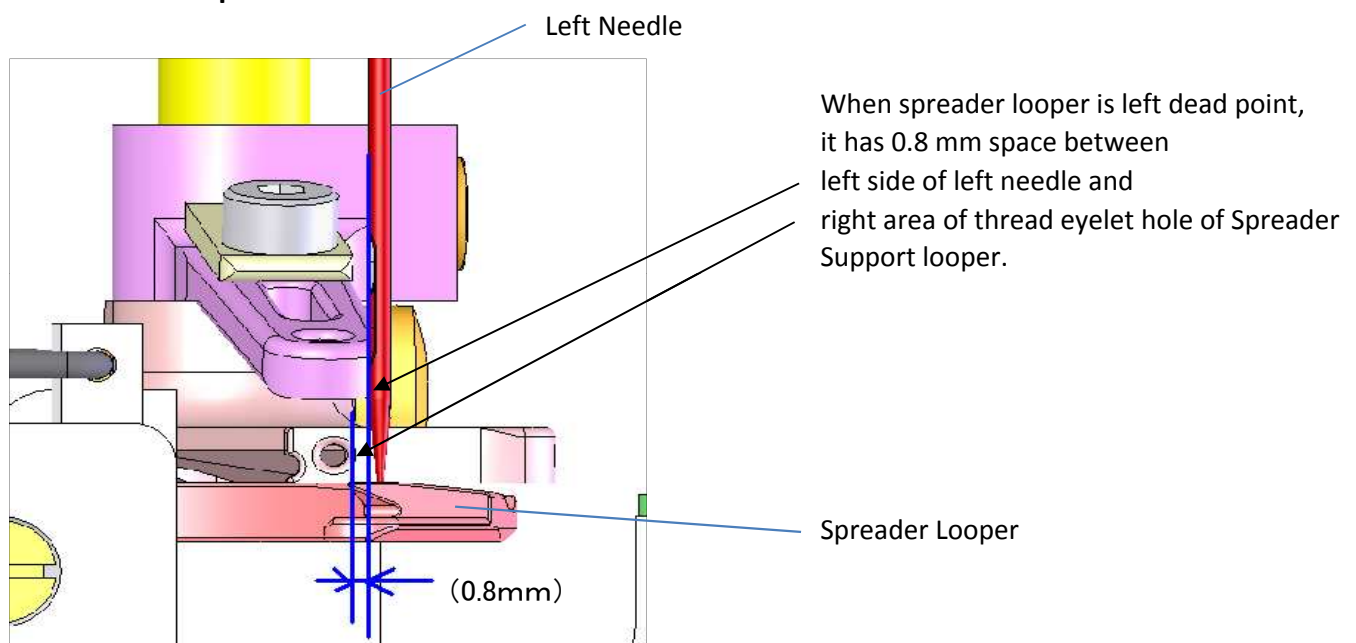
Adjust like this

Almost center ( little bit right ) between center needle and right needle

## 4-2. Hight

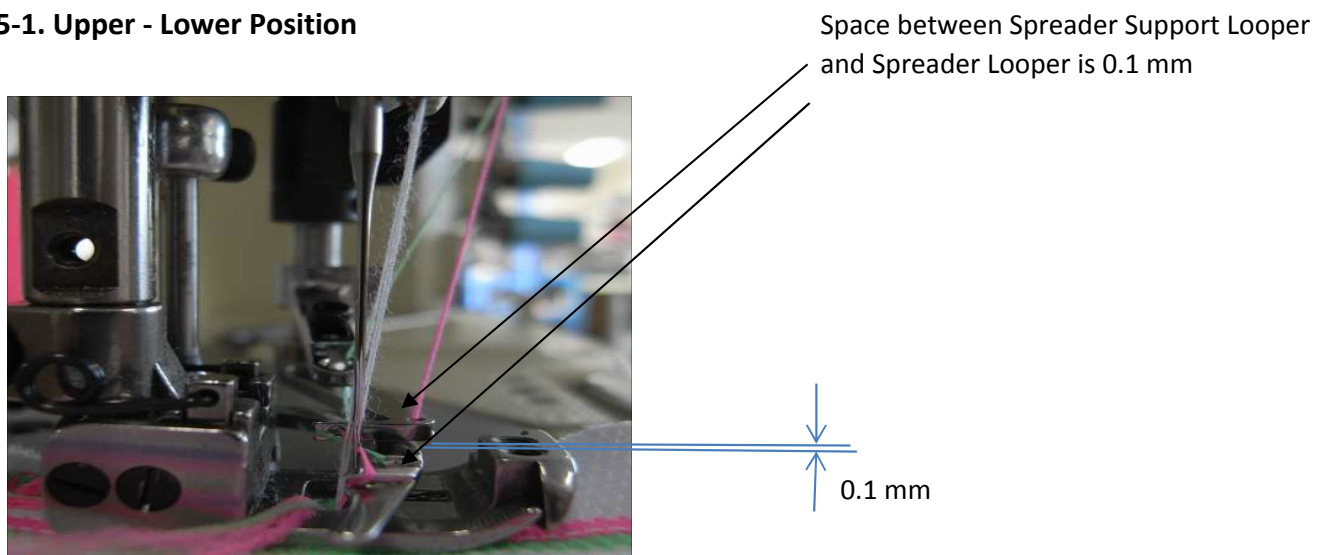


## 4-3. Front - Back position



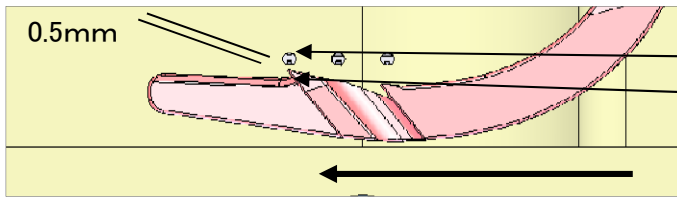
## 5. POSITION OF SPREADER LOOPER

### 5-1. Upper - Lower Position



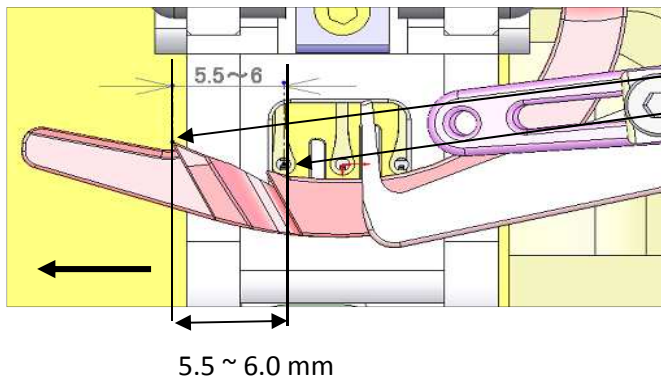


## 5-2. Position for Front - Back



When spreader looper is moving from right to left, the space between the left needle and the left edge of the spreader looper is 0.5 mm

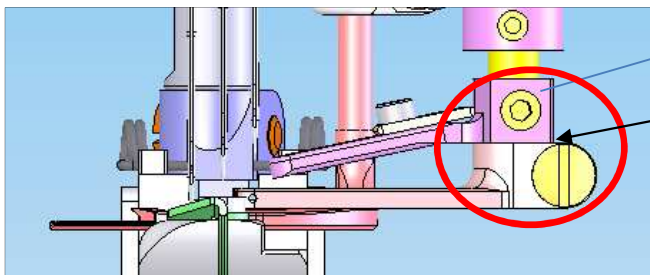
## 5-3. Position for Right - Left



When spreader looper is at left dead point, distance between left edge of spreader looper and left needle is 5.5 ~ 6.0 mm .

## 6. POSITION OF SPREADER EYELET UPPER

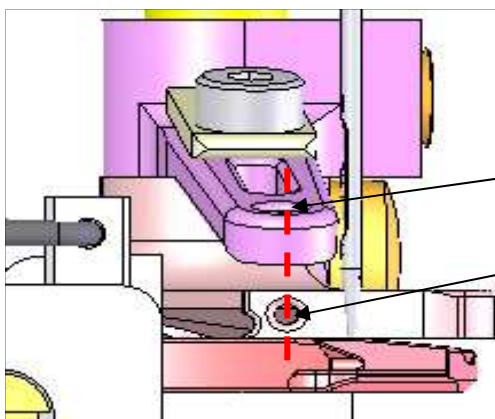
### 6-1. Upper - Lower Position



Spreader Eyelet Upper

Fix like this

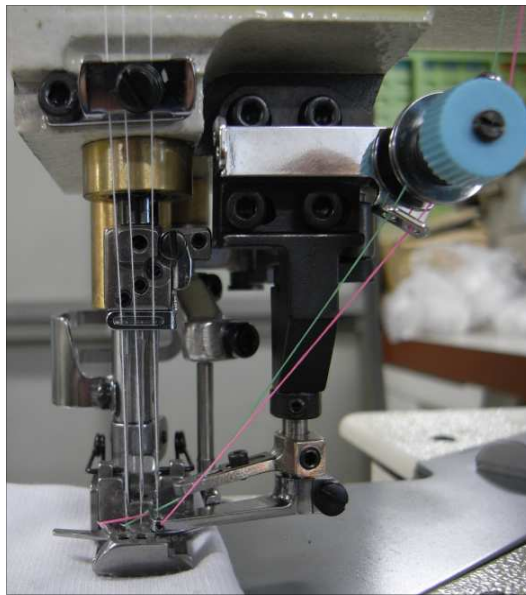
### 6-2. Position Relation



When spreader looper is left dead point, it must be same vertical position between center hole of upper spreader eyelet and center hole of spreader support looper.

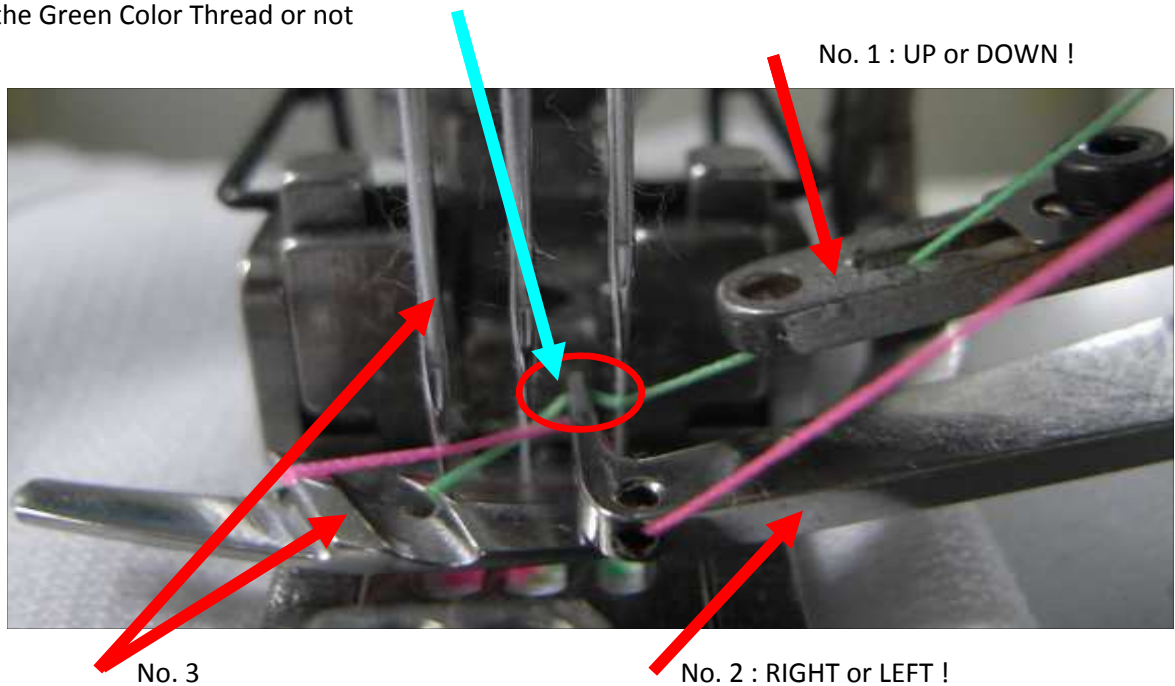
## 7. RE-ADJUSTING AFTER THREADING

USE Only WOOLLY Thread



### POINT 1

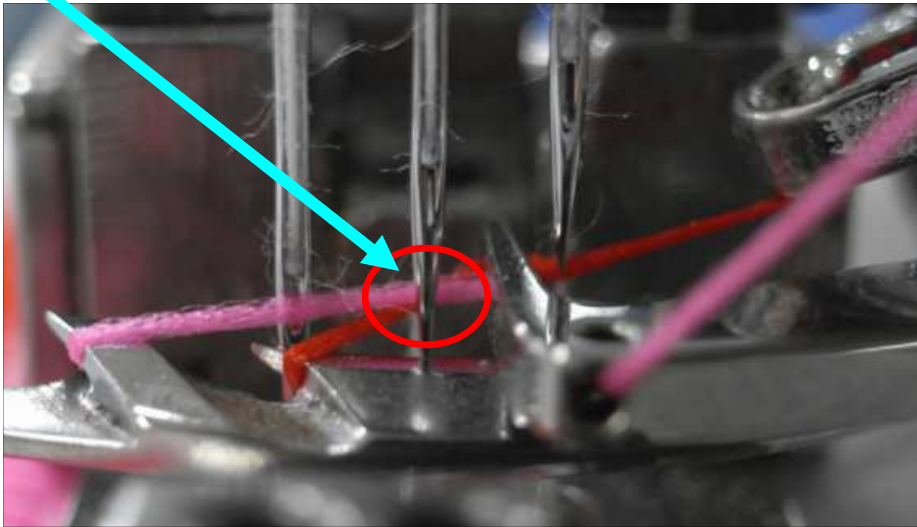
Please check whether Top Point of Spreader Support Looper is touching the Green Color Thread or not



If not,	No. 1	Adjusting the height of Spreader Eyelet Upper.
	No. 2	Checking the position of Spreader Support Looper.
	No. 3	Checking the timing between needle and Spreader Looper.

## POINT 2

Please check whether the pink thread is positioned on the back side of the center needle



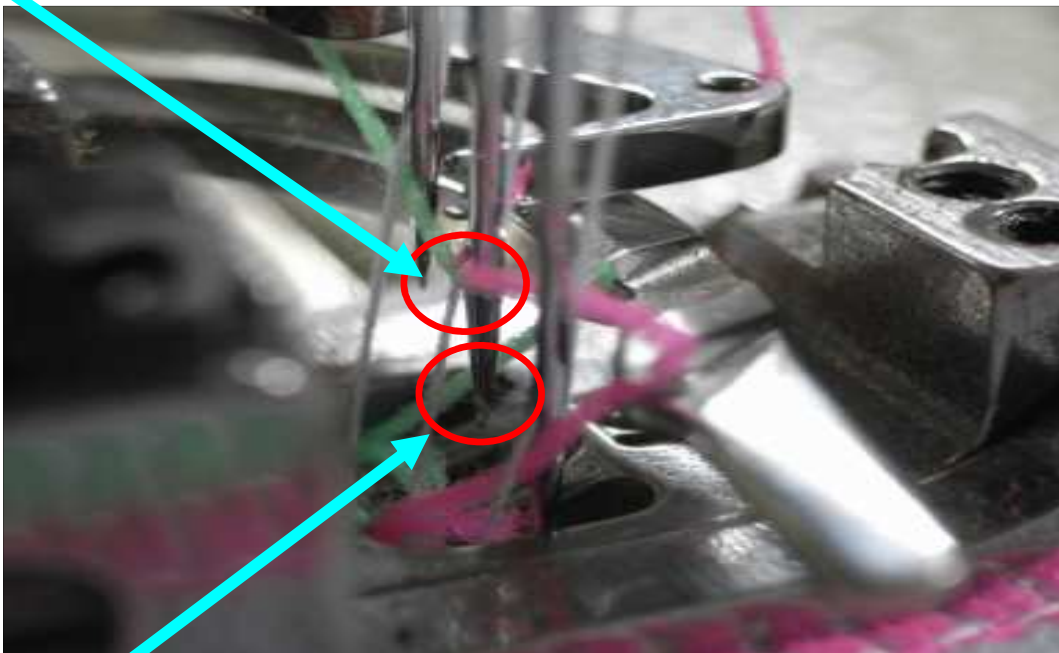
If not,

- \* Adjusting the height of Spreader Support Looper. ( 4-2. )
- \* Adjusting the Front-Back position of Spreader Support Looper. ( 4-3. )

## POINT 3

When needles go down,  
check whether green thread and center needle are positioned as below picture

Upper part of the green thread is located at back side of the center needle.



Bottom part of the green thread is located at the **FRONT SIDE** of Center Needle.

If not,

- \* Check the timing between needle and upper spreader eyelet .
- \* Check the stitch length.  
Recommended Stitch Length : **1.4 mm ~ 1.8 mm**  
must use **SHORT STITCH NEEDLE PLATE**.

Half & Half



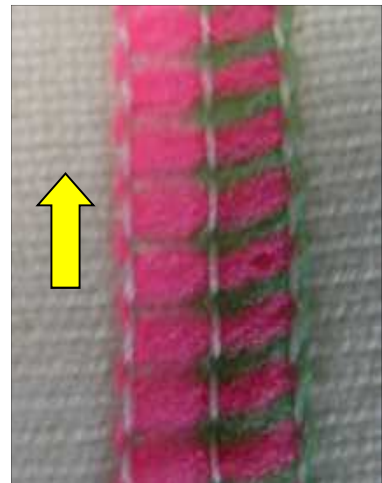
# Dual Stitch RX/REX-9803-WD, WX-8803-WD

## All & Half

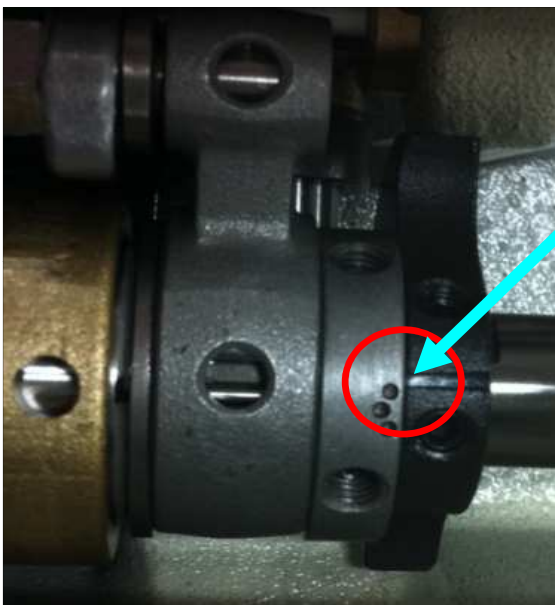
### Procedure for Changing and Adjusting

\* The is only for woolly thread

In case of SPUN thread, re-adjust for thread tension condition and the timing between needle and the thread looper.



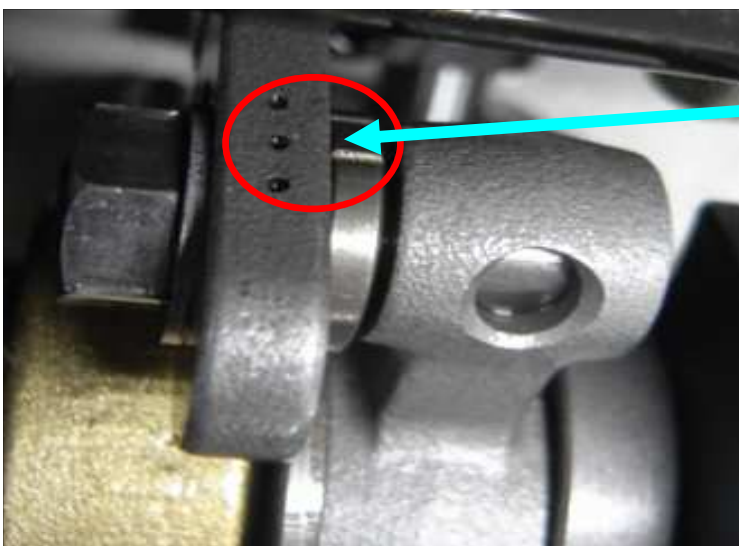
#### 1. TIMING POSITION OF SPREADER



Adjust like this  
It is necessary to micro-adjust in this range while checking of thread condition.

All & Half  
All & All  
Same Adjusting

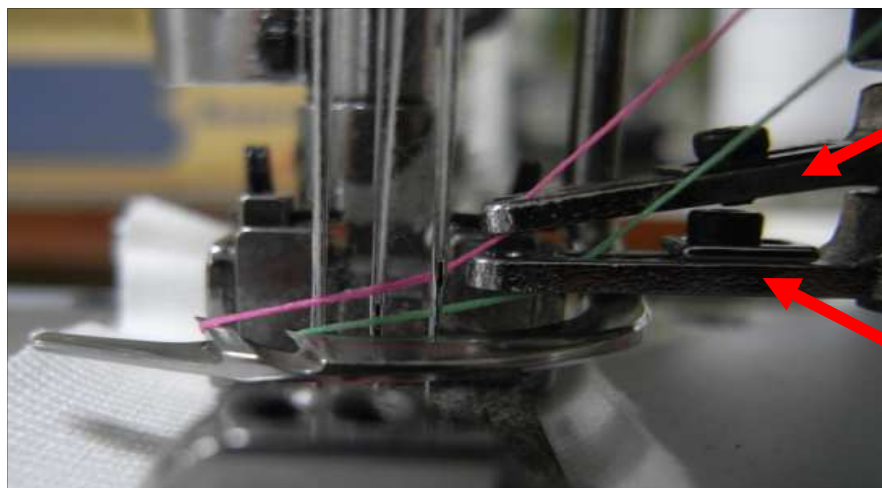
#### 2. LEVER POSITION OF SPREADER



Adjust like this

All & Half  
All & All  
Same Adjusting

### 3. THREADING AND PARTS POSITION



Spreader Eyelet Upper

Spreader Eyelet Lower

### 4. DIFFERENCE OF THE PARTS

< Half & Half >

and

< All & Half, All & All >



Spreader Support Looper

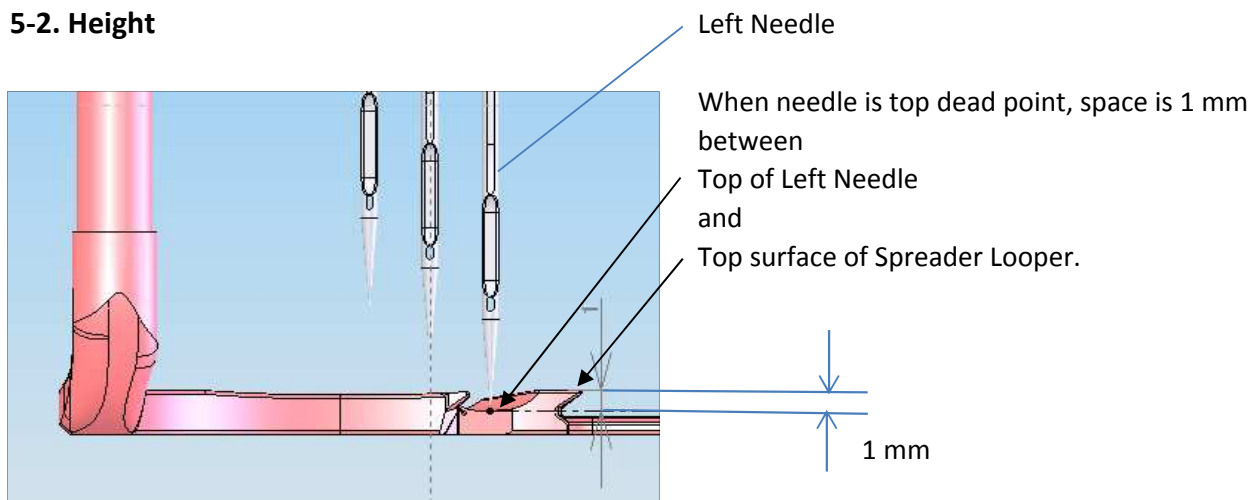
Spreader Eyelet Lower

### 5. POSITION OF SPREADER LOOPER

#### 5-1. Upper - Lower Position

\* Same adjusting method as Half & Half.

#### 5-2. Height

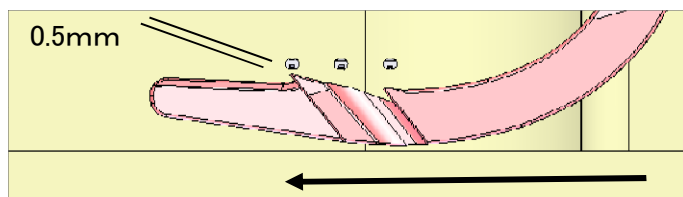


All & Half

### 5-3. Position for Front - Back

\* Same Adjusting Way as Half & Half.

But, need to be re-adjusted, due to movement change

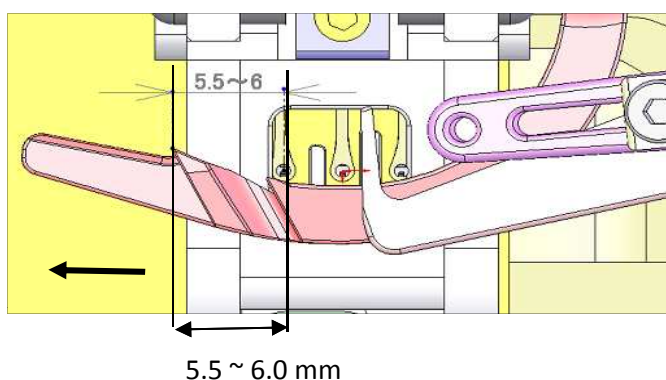


All & Half  
All & All  
Same Adjusting

### 5-4. Position for Right - Left

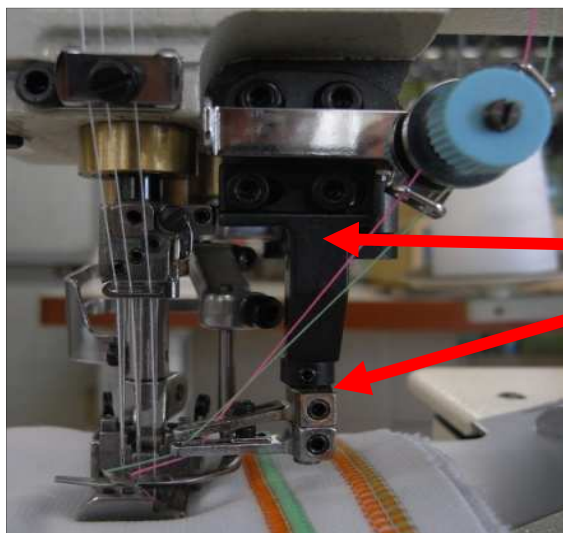
\* Same Adjusting Way as Half & Half.

But, need to be re-adjusted, due to movement change



All & Half  
All & All  
Same Adjusting

## 6. POSITION CHANGING OF DRIVING SHAFT



Move the Drive Shaft to the **LEFT**, by moving of the Bracket.

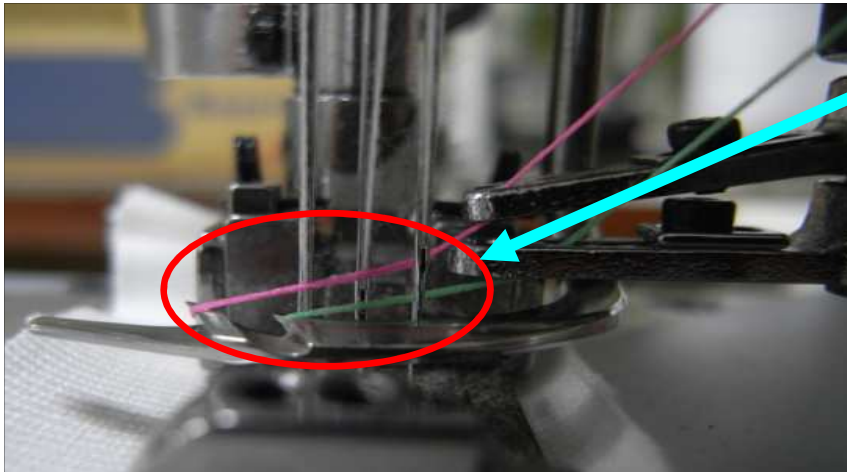
It is possible to prevent Skip Stitch, by moving the thread eyelet to the LEFT.

Bracket

Drive Shaft

All & Half  
All & All  
Same Adjusting

## 7. POSITION OF SPREADER EYELET - UPPER AND LOWER



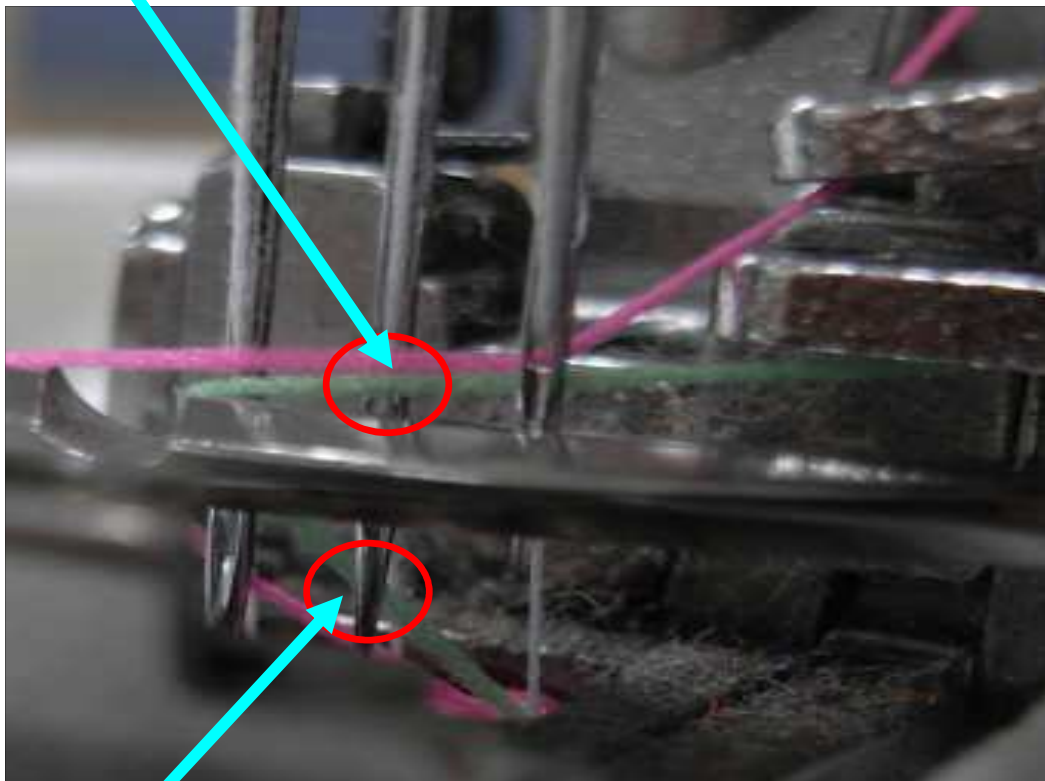
Adjust like this

Do not adjust both spread eyelet to move so deeply, which causes to make Skip Stitch.

### POINT

When Needles go down,  
Please check whether the position of the green thread and the center needle is located as the photo or not!

The upper part of the green color thread is located in front of the center needle



The bottom part of the green color thread is locate on the back side of the center needle.

If not,

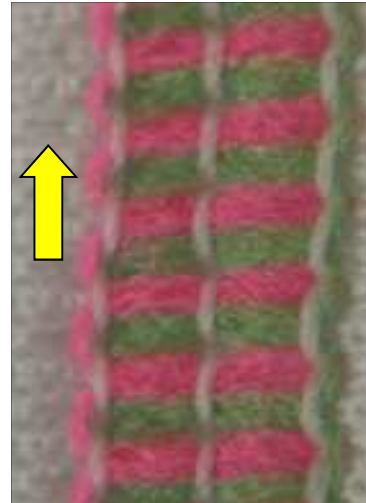
\* Check the timing between the needles and the spreader eyelet.

# Dual Stitch NR/NRE9803-WD, NW8803-WD

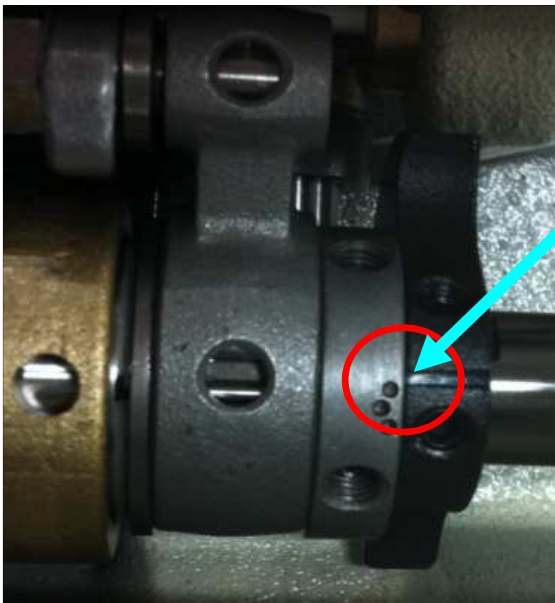
## All & All

### Procedure for Changing and Adjusting

\* The following Changing and Adjusting are only for WOOLLY thread. In case of SPUN thread, re-adjust the thread tension condition and the timing between the needles and the spreader looper.



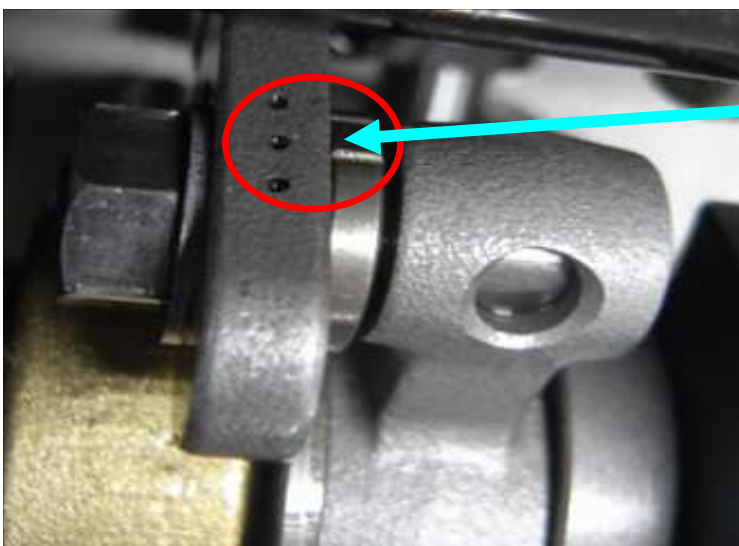
#### 1. TIMING POSITION OF SPREADER



Adjust like  
It is necessary to micro-adjust in this range  
while checking of the thread condition.

All & Half  
All & All  
Same Adjusting

#### 2. LEVER POSITION OF SPREADER

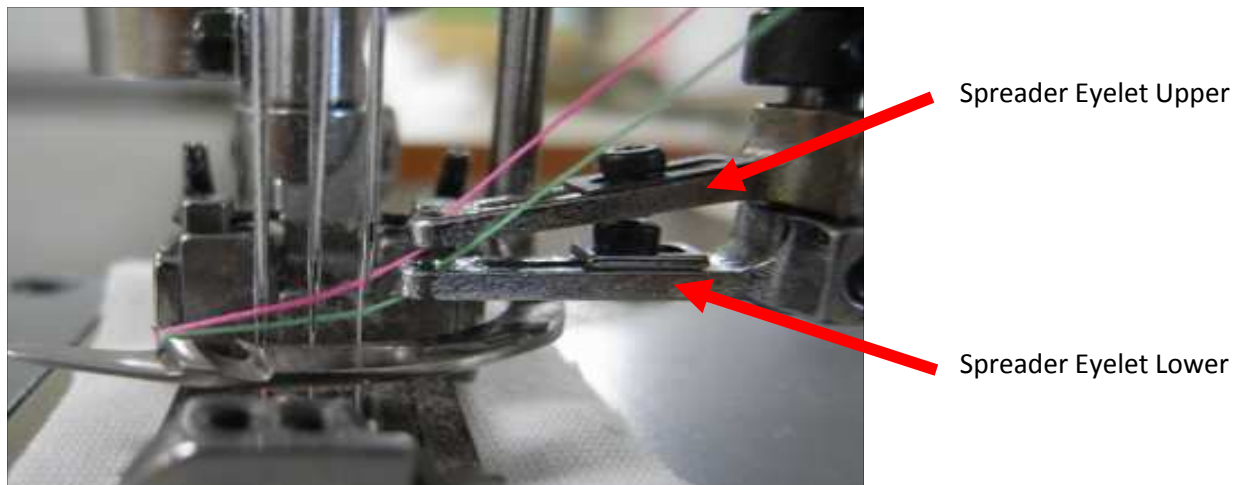


Adjust like this

All & Half  
All & All  
Same Adjusting



### 3. THREADING AND PARTS POSITION

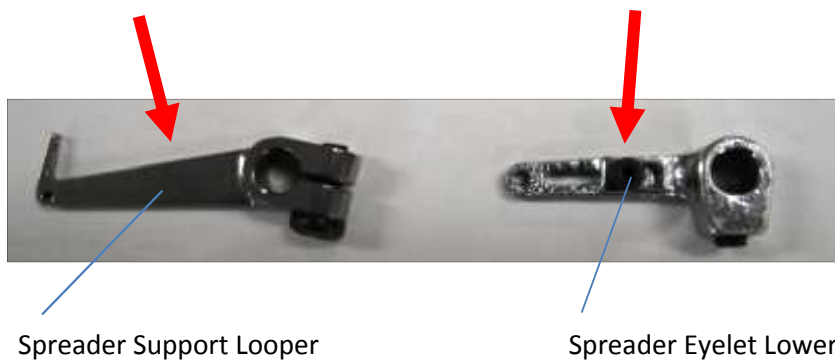


### 4. PARTS DIFFERENCE BETWEEN

< Half & Half >

and

< All & Half, All & All >

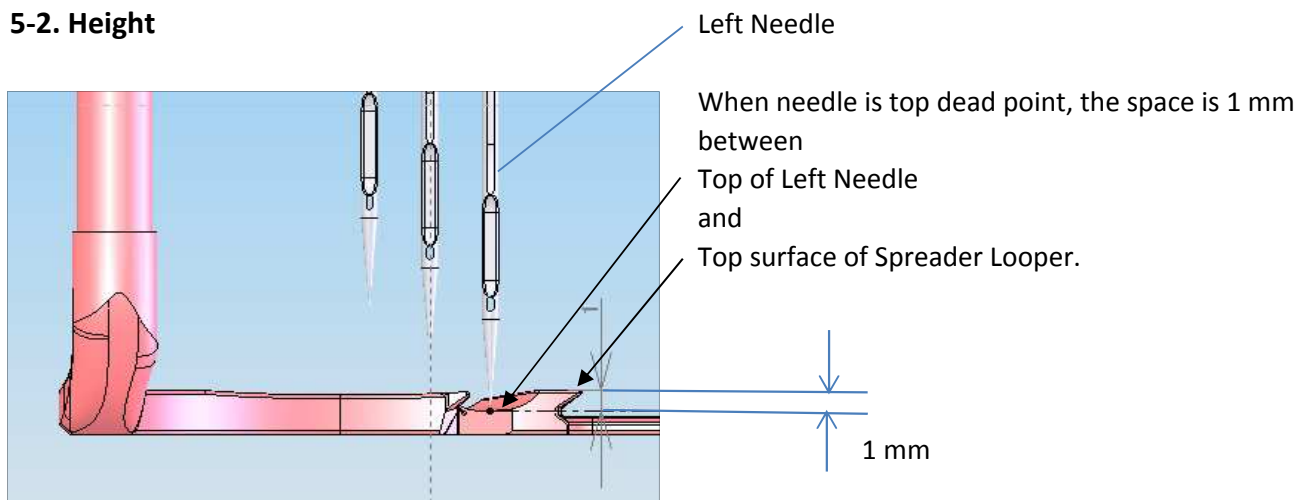


### 5. POSITION OF THE SPREADER LOOPER

#### 5-1. Upper - Lower Position

\* Same adjusting method as Half & Half.

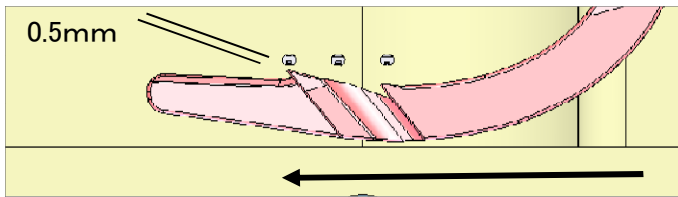
#### 5-2. Height



### 5-3. Position of Front / Back

\* Same Adjusting method as Half & Half.

**But, need to be re-adjusted, due to the change in movement**

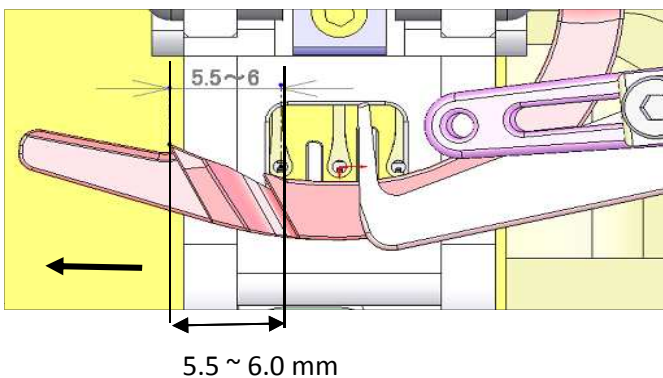


All & Half  
All & All  
Same Adjusting

### 5-4. Position for Right - Left

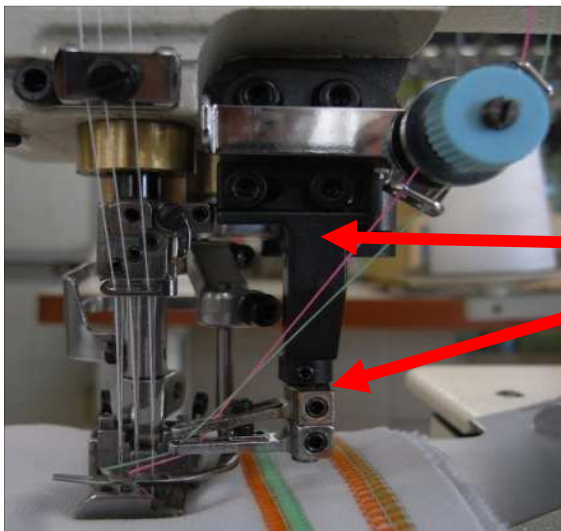
\* Same Adjusting method as Half & Half.

**But, need to be re-adjusted, due to the change in movement**



All & Half  
All & All  
Same Adjusting

## 6. POSITION OF DRIVING SHAFT



Move the Driving Shaft to the **LEFT**, by moving of the Bracket.

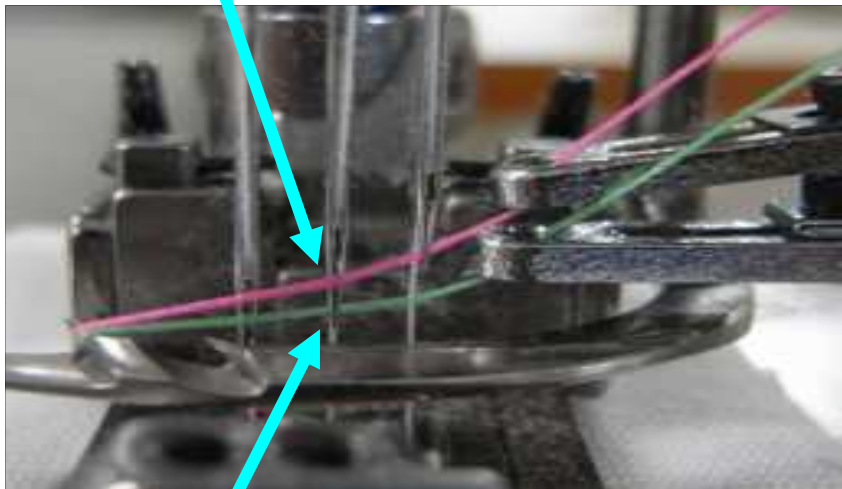
It is possible to prevent Skip Stitch, by moving the thread eyelet to the **LEFT**.

Bracket  
Driving Shaft

All & Half  
All & All  
Same Adjusting

## 7. POSITION OF SPREADER EYELET - UPPER AND LOWER

The pink color thread is located in front of the center needle.



Adjust like this photo.

Green color thread is located **at BACK SIDE** of Center Needle.

## 8. OTHER

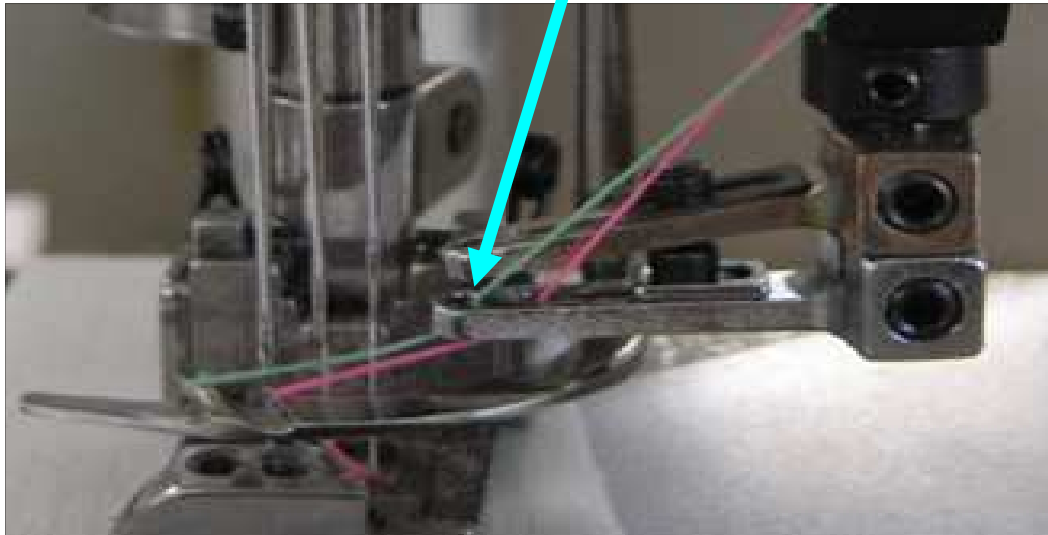
\* Using only the upper spreader eyelet, it can make standard cover stitch



# Special Dual Stitch NR/NRE9803-WD, NW8803-WD

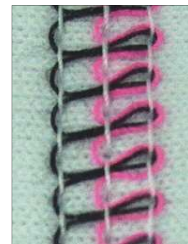
## All & Half

Reversed All & Half is also possible after the changing of threading to Spreader Eyelet Lower with further -adjustment.



Reversed All & Half

Standard All & Half



### POINT

When the Needles go DOWN ,  
Green Color Thread is located **BACK SIDE** of Center Needle.

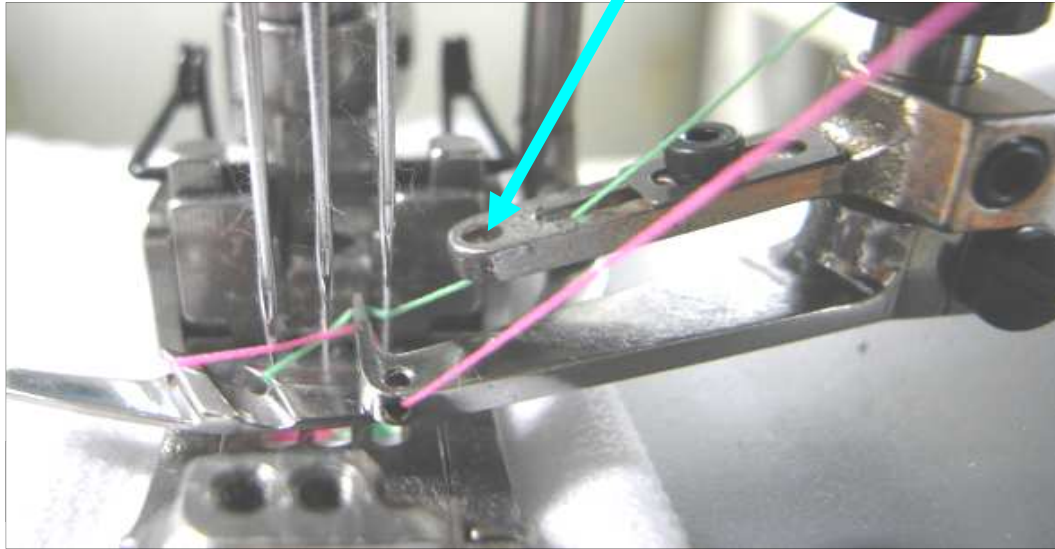
\* Beautiful Stitch Formation can be made with using SPUN thread and longer stitch length.

# Half & Half

Two more possible stitch formation, adjustment.

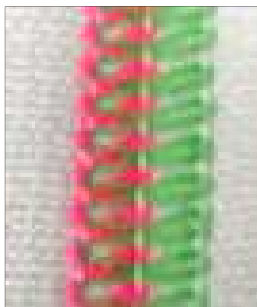
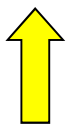
by changing of threading with further

\* Thread the green thread into this Eyelet hole.



Half & All ( left side - half )

Half & Reversed All ( left side - half )



Green Color Thread is located **FRONT SIDE** of Center Needle.



Green Color Thread is located **BACK SIDE** of Center Needle.