

# FX gauge information



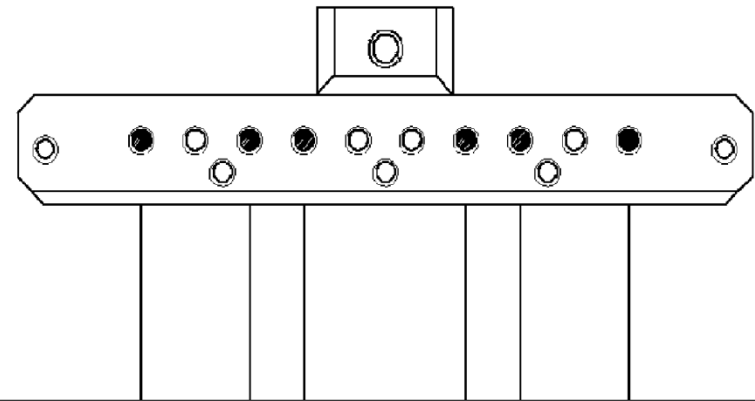
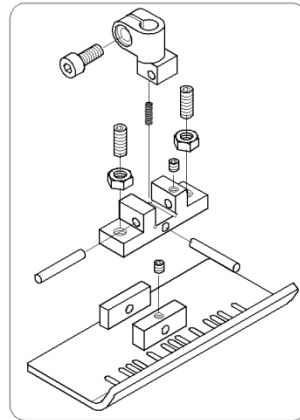
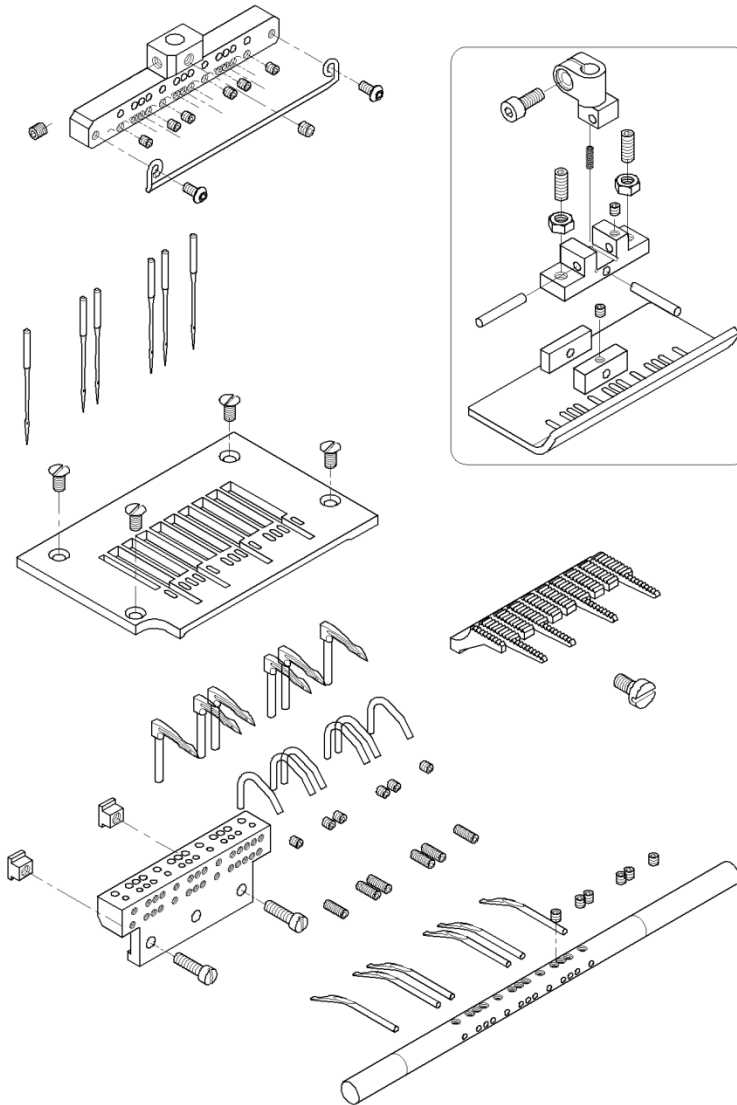
Model name	Distance between needles (mm)	Needle total width (Inch)	Needle total width (mm)	Max needle usage	Thread tension	Number of equipped loopers
FX4404P	8.5 (1/3")	1	25.4	4	4X4	4
FX4404P	6.4 (1/4")	3/4	19.1	4	4X4	4
FX4404P	9.5 (3/8")	1+ 1/8	28.6	4	4X4	4
FX4404P	10.6	1+ 1/4	31.8	4	4X4	4
FX4404P	12.7 (1/2")	1+ 1/2	38.1	4	4X4	4
FX4404PSF	6.4, 19.1, 6.4 (1/4", 3/4", 1/4")	1+ 1/4	31.8	4	4X4	4
FX4404PSF	6.4, 25.4, 6.4 (1/4", 1", 1/4")	1+ 1/2	38.1	4	4X4	4
FX4406P	6.4 (1/4")	1+ 1/4	31.8	6	6X6	6
FX4406PL	6.4 (1/4")	1+ 1/4	31.8	6	6X6	6
FX4406PL	8.5 (1/3")	1/3	42.5	6	6X6	6
FX4408P	6.4	1/4	44.5	8	12X12	8
FX4409P	6.4	1/4	50.8	9	12X12	9
FX4409P-UTC	6.4	1/4	50.8	9	12X12	9
FX4412P	6.4 (1/4")	2 + 3/4	69.9	12	12X12	12
FX4412P	5.0		55.0	12	12X12	12
FX4412P	4.8	3/16	53.4	12	12X12	12
FX4412PL	6.4 (1/4")	2 + 3/4	69.9	12	12X12	12
FX4413P	※1	2 + 1/4	57.2	6	6X6	6
FX4418P	※1	2 + 1/2	63.5	6	6X6	6
FX4418SPF-SA	6.4 (1/4")	1/4	108.0	6	12X12	6
FX4421P	3.2	1/8	38.1	11	12X12	11
FX4423P	3.2	1/8	69.9	12	12X12	12

※ 1 Please refer to the pictures from next pages

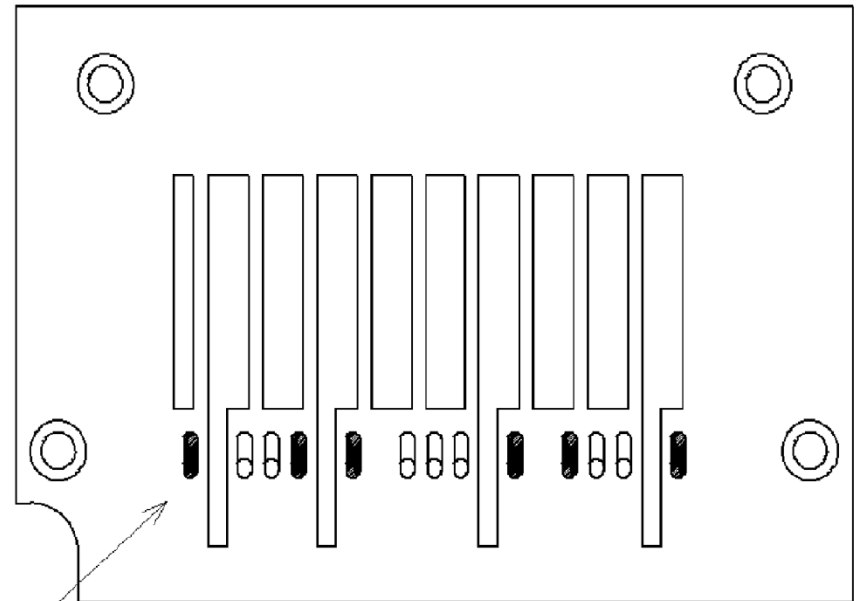
※ For UTC / UTA / PMD / PE models please refer to standard models

# FX4413P

# KANSAI SPECIAL



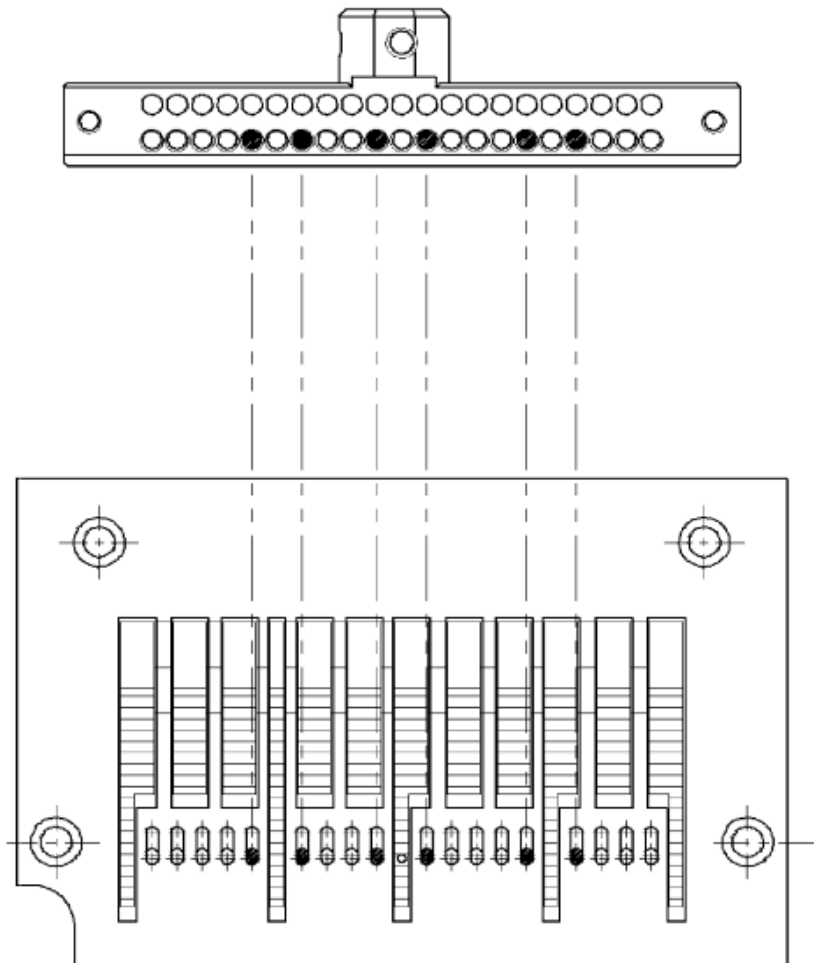
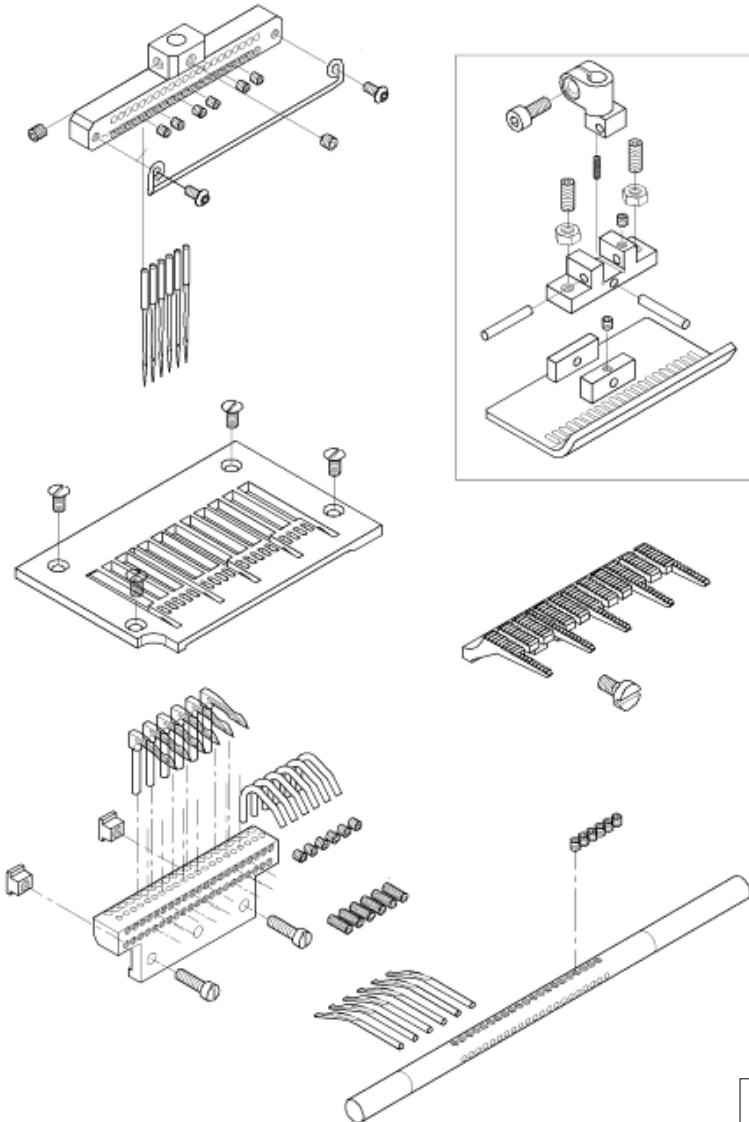
\* Needle distance is 1/4 or 1/8



The black marks in the needle plate show factory needles set up

# FX4418P

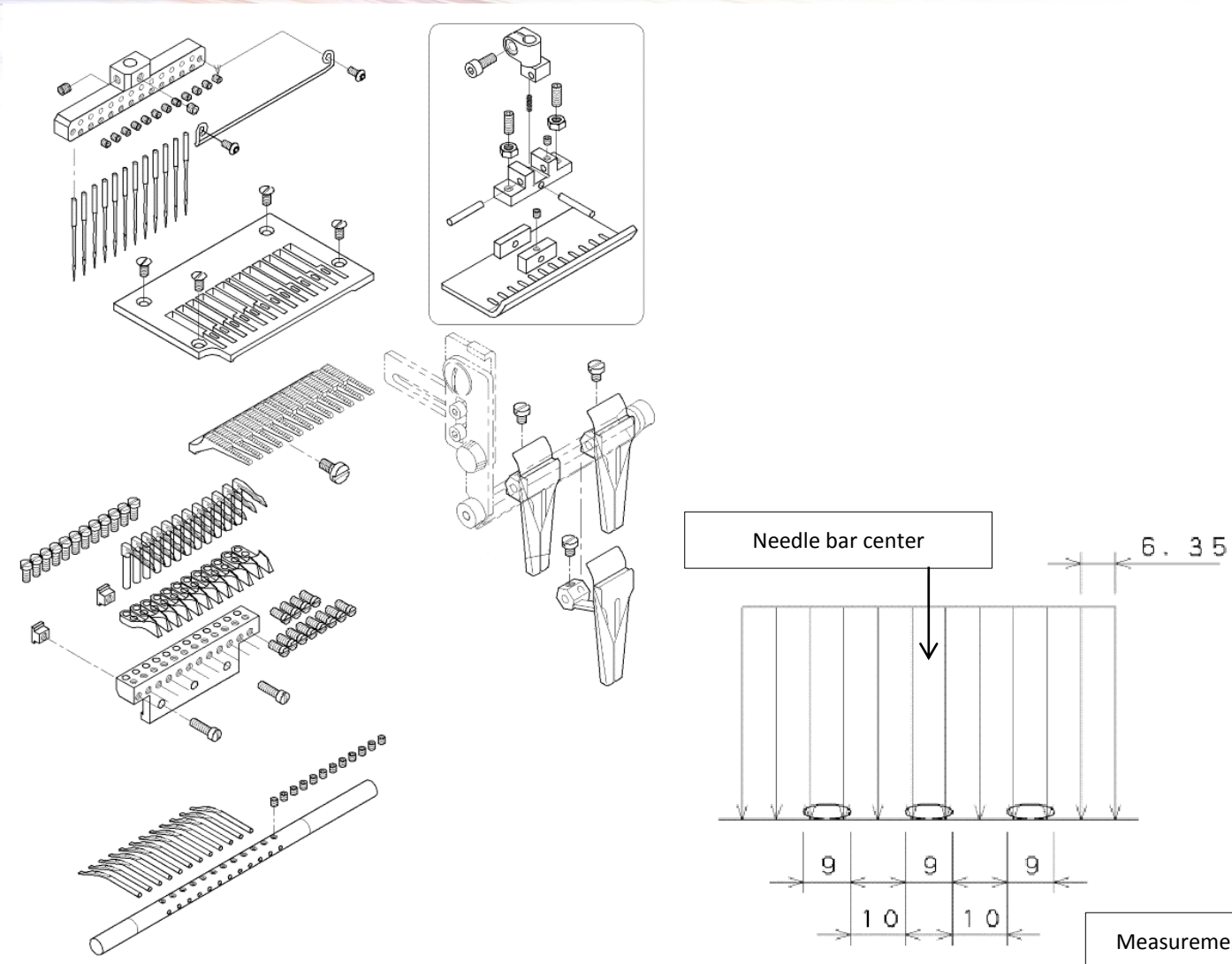
# KANSAI SPECIAL



The black marks in the needle plate show factory needles set up

# FX4406PL 1/4"

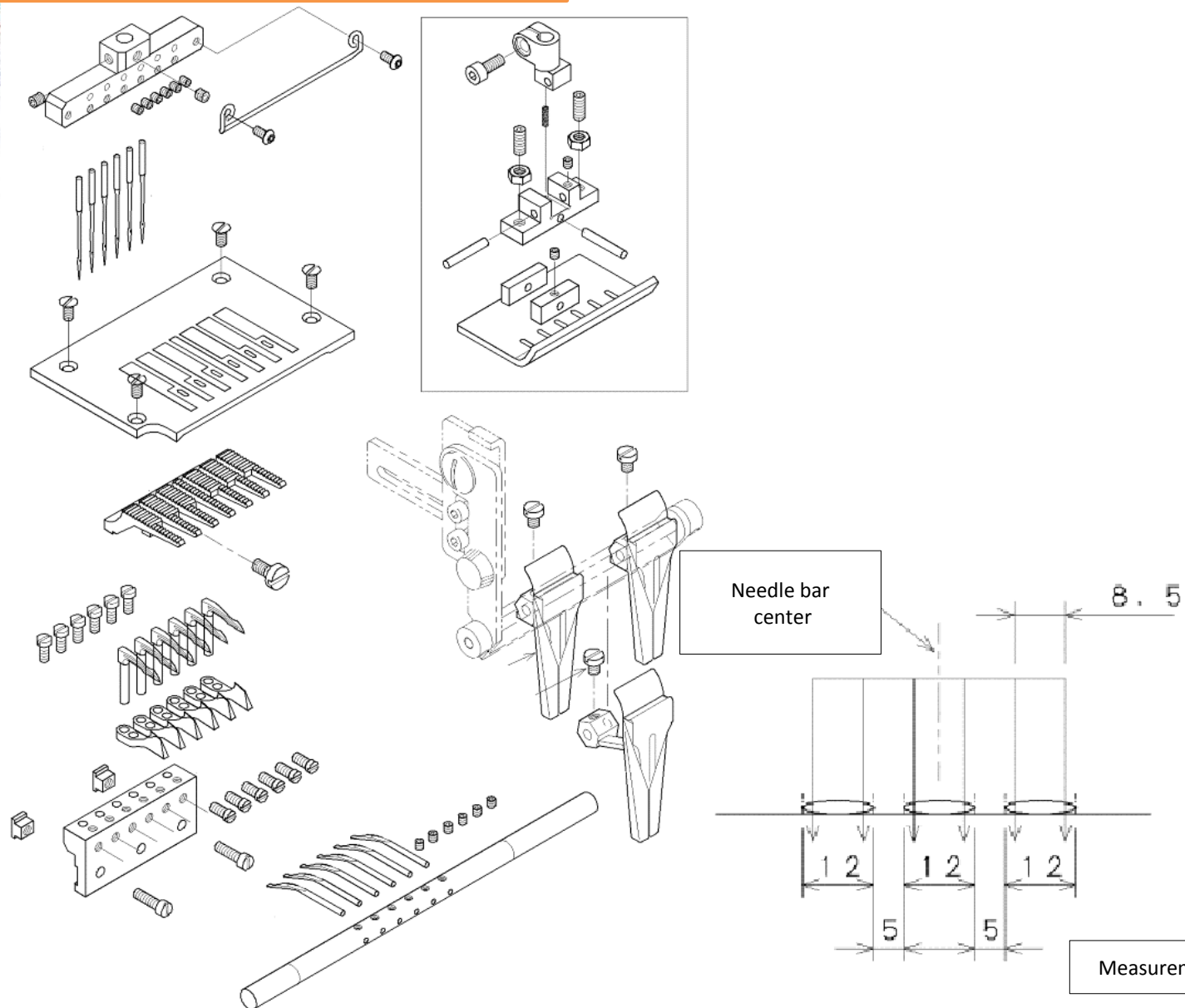
**KANSAI**  
SPECIAL





# FX4406PL 1/3"

**KANSAI**  
SPECIAL



# FX4412PL 1/4"

**KANSAI**  
SPECIAL

