

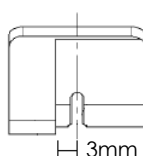
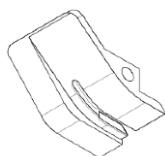
# NC1001GSJF-CD-TL1-UTAB



NC1001GSJF-CD-UTC-TL1 is one needle,  $\phi 65\text{mm}$  small cylinder bed, double chain stitch machine with pneumatic thread trimmer, air blower, condensed stitch device, anti-fray device.

Features of this machine are as below,

1.  $\phi 65\text{mm}$  cylinder
2. Built in folder for 3ply(controlled by knee switch)
3. Front and back differential feed mechanism, for sewing cross section seam, especially for extra-heavy fabrics
4. Anti-fray device
5. Thread cutting device
6. Auto foot lifter
7. Condensed stitch device
8. Tractor presser foot



Presser foot from front view

3mm from the needle

## Chain stitch leg hemming



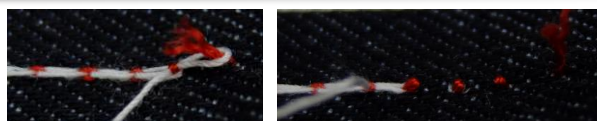
Old school American style denim is back in fashion nowadays. Many denim buyers are looking for the denim with double chain stitch leg hemming which makes unique roping effect after washing.

Kansai special now offers 'NC1001 series' which gives reliable double chain stitch finish.

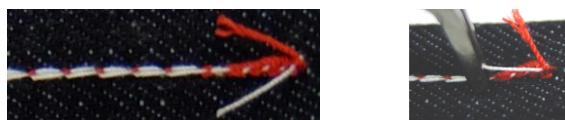
## TL1- Anti-fray technology

This machine has adapted anti-fray technology. This mechanism has following advantages

1. Needle thread and looper thread are crossed at the end of the seam, so it can prevent thread fraying
2. Machine comes with a stitch condensing device which reinforces anti fray effect



Conventional chain stitch



Anti-fray + condensed stitch

Model Name	Application	Material	Needle	No. of threads	Feed dog pitch	Needle bar stroke	Stitch length	Diff.Feed ratio	Presser foot lift	Maximum Speed
NC1001GSJF-CD-TL1-UTAB	Bottom hemming	Denim	TVx5 (#14-22)	2-3	2.54mm	34mm	6-11 (2.3-4.2mm)	0.8 - 1.2	9	3,500