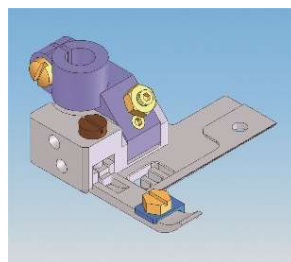


NW8803GMG



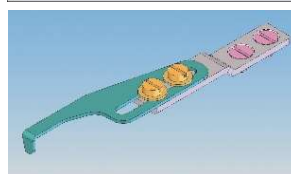
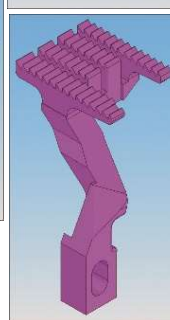
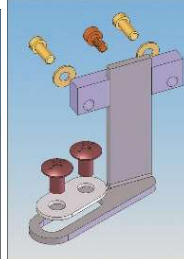
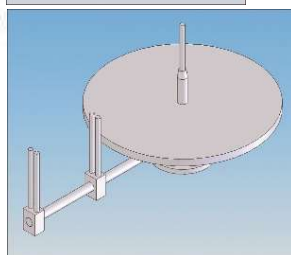
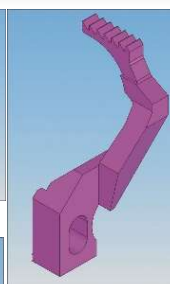
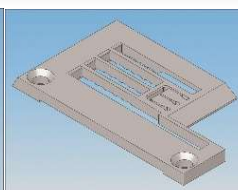
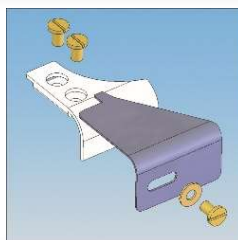
3 needles, flatbed, top and bottom cover stitch machine for multi gauge

- Plain seaming
- Hemming
- Tape binding

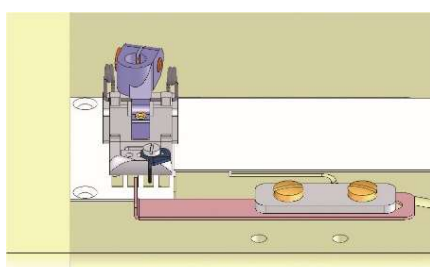
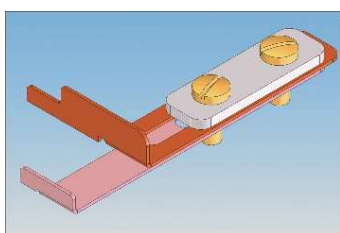


Complimentary Conversion Kit

1. Tape binding for neck and sleeve



2. Hemming for bottom and sleeve



※The conversion kit is included in the purchase

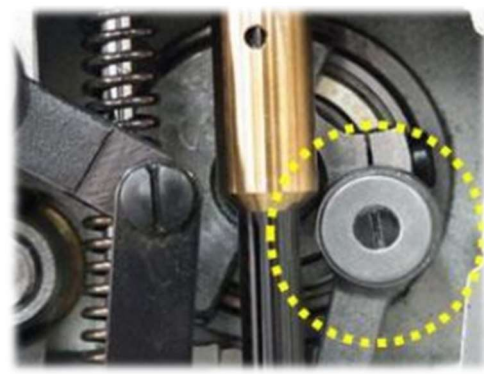
Features



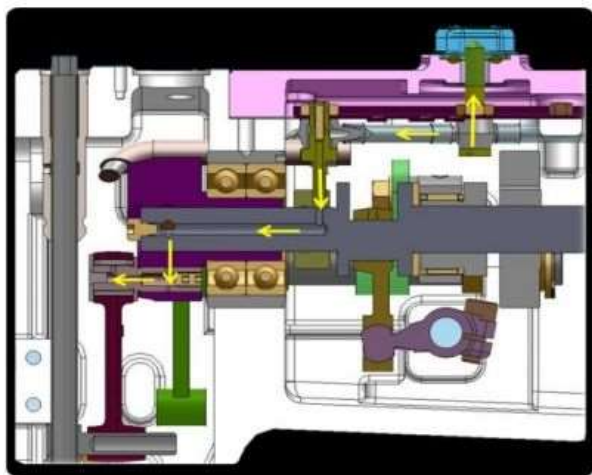
Double layered oil seals applied in the needle bar and the presser foot. This new oil seals protect your garment from oil stains.



Micro adjustable looper holder. With this new looper holder system, gauge adjustment become much easier.



Needle bar stroke can be changed with only a screwdriver .
31mm ⇔ 33mm



State of the art lubrication mechanism circulates the oil to the needle bar link bearing. This mechanism reduces noise and vibration. Left picture shows the flow of the oil while machine running.



Sliding thread take-up mechanism

By pulling the lever, the looper thread take-up slides down toward the operator. This mechanism makes easy to thread and troubleshoot.

Model Name	Application	Material	Needle	No. of threads	Needle gauge	Needle bar stroke	Stitch length	Diff.Feed ratio	Presser foot lift	Maximum Speed
NW8803GMG	Multi purpose	Light to medium	UY128GAS #9 ~ 14	5	7/32, 1/4	31 (31⇔33)	8~16 (1.6~3.2mm)	0.7~2	6	6000

