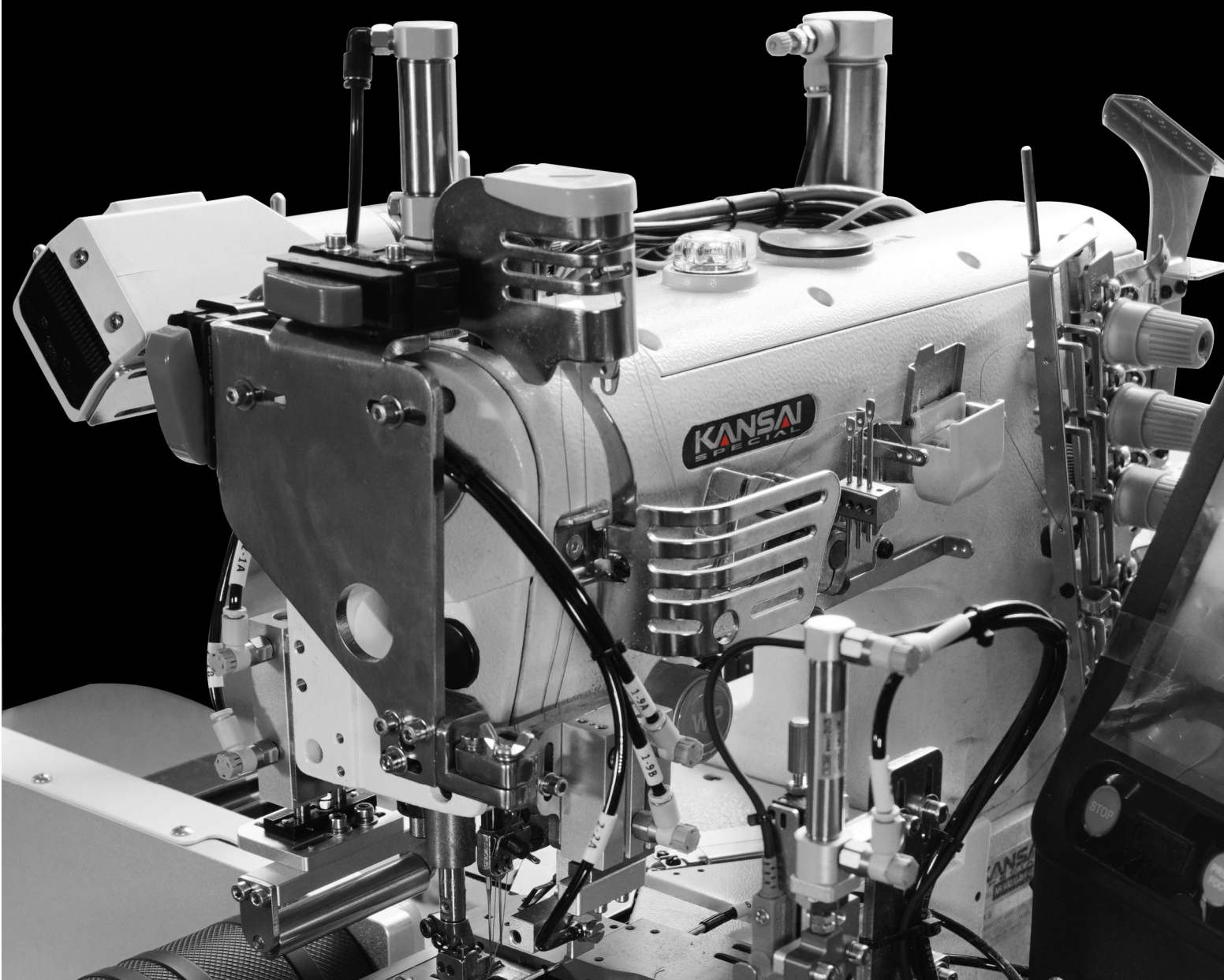


MACHINES GUIDE

2025/2026



MACHINES LINE UP

1. NFS6604G2FMH-H-V-AC
2. NC1103GALK-UF-UTA
3. NR9803GD-UF-UTA
4. NW8803GF-UF-AC31F/MK-2
5. NC1103GUS-CD-UTA
6. FX4412P-CD-UTC
7. SQ7702FB-L-TC2
8. SQ7702FB-P
9. NVK1803D
10. FX4406PL-AD
11. NC1001GUSJ-CD-UTAB
12. NL5803GBP
13. SQ7803LR-PDX
14. WFB5509PA-4WAC
15. NW2202GPC-BK30/DD
16. JJT5014H-01M-2X4-ARB-3
17. JJ3014GE-60HK-3X4-ASG-2
18. NR9803GPEHK-AHK-3

OTHERS

Makitron

Karitorun

NFS6604G2FMH-H-V-AC

COMING SOON!

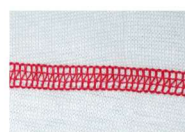
Machine for flat seaming

4 needle, 6 thread feed-off-the-arm, top and bottom cover stitch machine with double-cut presser foot. This machine is suitable for overlapping such as joining of high quality under wear, sports wear, etc.

NEW

Chain cutter device

The sensor detects the fabric and the cut the thread chain.



Features

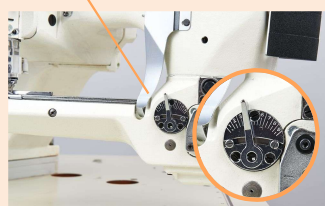
Super-differential feed mechanism

The conventional differential ratio has been improved to support a differential ratio of 1:0.5~1:1.5.

It is also possible to sew materials with high stretch smoothly.

The differential ratio can be easily adjusted by a manual lever.

Differential adjustment lever



TIP!



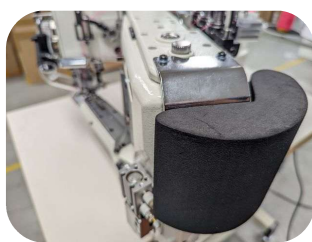
★ The stitch length can also be adjusted with a manual lever.

【User friendly functions】



■ Mount base

The mount base has been redesigned and the height can be adjusted to suit the operator.



■ Cushion pad

Cushion pad are available to reduce the burden of work.

Specifications	NFS6604G2FMH-H-V-AC
Max. Speed	3500~3800 rpm
Needle Type	Organ FLx118GCS 11
Stitch Length	10~16 stitch/inch
Presser Foot Lift	8 mm
Needle Bar Stroke	30 mm
Diff. Feed Ratio	Front-to-back movement (ratio 0.5~1.5)
Gauge Size	5.2mm , 6.0mm
Application	Plain seaming
Material	Light to Medium

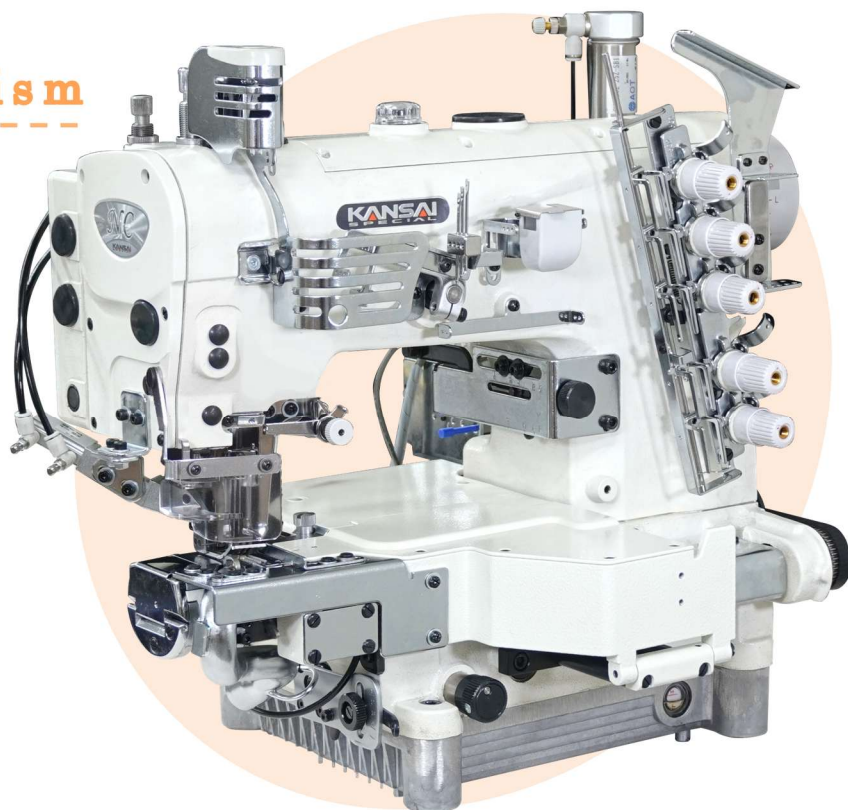


NC1103GALK-UF-UTA

Hemming machine with top feed mechanism

3 needle, high performance, small cylinder bed, top and bottom cover stitch machine with top feed mechanism.

This series is most suitable for knit fabrics in order to achieve uniform, flexible, and beautiful stitch formation.



Features

Thread cutting device

This device automatically cuts the thread after sewing is finished, eliminating the hassle of cutting the thread by hand.

This not only results in beautifully finished seams but also leads to a reduction in working time.



【User friendly functions】



■ Top feed

Top feed mechanism feeds the fabric properly. The feed amount can be adjusted by micro adjustment. This mechanism prevents puckering, ply shifting, and twisting.



■ Micro adjustment

Specifications	NC1103GALK-UF-UTA
Max. Speed	4500 rpm
Needle Type	Organ UYx128GAS #11
Stitch Length	8~16 stitch/inch
Presser Foot Lift	6 mm
Needle Bar Stroke	33 mm
Diff. Feed Ratio	Front-to-back movement (ratio 0.8~1.4)
Gauge Size	7/32 , 1/4 inch
Application	Top & bottom covering
Material	Light to Medium



NR9803GD-UF-UTA

Hemming machine with top feed mechanism

3 needle, high performance, small cylinder bed, top and bottom cover stitch machine with top feed mechanism.

This series is most suitable for knit fabrics in order to achieve uniform, flexible, and beautiful stitch formation.



Features

Thread cutting device

This device automatically cuts the thread after sewing is finished, eliminating the hassle of cutting the thread by hand.

This not only results in beautifully finished seams but also leads to a reduction in working time.



【User friendly functions】



■ Top feed

Top feed mechanism feeds the fabric properly. The feed amount can be adjusted by micro adjustment. This mechanism prevents puckering, ply shifting, and twisting.



■ Micro adjustment

Specifications	NR9803GD-UF-UTA
Max. Speed	4500 rpm
Needle Type	Organ UYx128GAS #11
Stitch Length	8~16 stitch/inch
Presser Foot Lift	6 mm
Needle Bar Stroke	33 mm
Diff. Feed Ratio	Front-to-back movement (ratio 0.8~1.4)
Gauge Size	7/32, 1/4 inch
Application	Plain seaming
Material	Light to Medium



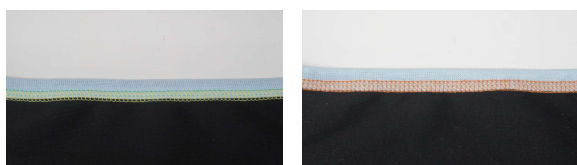
NW8803GF-UF-AC31F/MK-2

Attaching tape machine with top feed mechanism

COMING SOON!

3 needle, 5 thread high performance,
flat bed, and top and bottom cover stitch
machine.

This series is most suitable for knit
fabrics in order to achieve uniform,
flexible, and beautiful stitch formation.



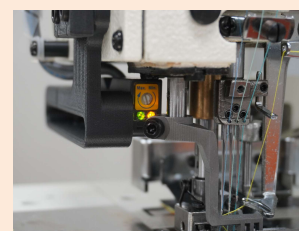
Features

AC31F (Tape cutter device)

The tape cutter device is available.
The sensor automatically detects the fabric and
cuts it accurately.
This device is reducing the workload in subsequent
processes and improving overall work efficiency.



Cutting device



Sensor for AC31F (Coming soon!)

【User friendly functions】



■ MK-2 (Tape feeder)

It can make beautiful
results on stretch
fabrics with optimal
tension adjustment.



■ Top feed

The feed amount can be
adjusted by micro
adjustment.

Specifications	NW8803GF-UF-AC31F/MK-2
Max. Speed	5500 rpm
Needle Type	Organ UYx128GAS #11
Stitch Length	8~16 inch
Presser Foot Lift	6 mm
Needle Bar Stroke	33 mm
Diff. Feed Ratio	Front-to-back movement (ratio 0.7~2)
Gauge Size (inch)	7/32, 1/4, 3/16
Application	Tape binding
Material	Light to Medium



NC1103GUS-CD-UTA

Top and bottom cover stitch machine

3 needle, high performance, ultra small cylinder bed, top and bottom cover stitch machine for small round cuff.

It is a model suitable for tube stitching for small ladies and baby clothes.

This model has anti fray technology.



Features



■ Ultra Small cylinder bed

The circumference of the cylinder is **145mm**. It is suitable for sewing thin tubes.



■ Thread trimmer

It is equipped with a thread trimming device as standard.



■ Upper and lower puller

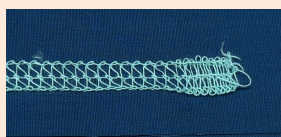
The feed amount of the upper and lower rubber pullers can be adjusted.

Condensed technology

Front



Back



The CD device (condensed stitch mechanism) reduces fraying.

Specifications	NC1103GUS-CD-UTA
Max. Speed	3000 rpm
Needle Type	Organ UYx128GAS #11
Stitch Length	7~16 stitch/inch
Presser Foot Lift	6 mm
Needle Bar Stroke	34 mm
Diff. Feed Ratio	N/A
Gauge Size	7/32 , 1/4 inch
Application	Top & bottom covering
Material	Light to Medium



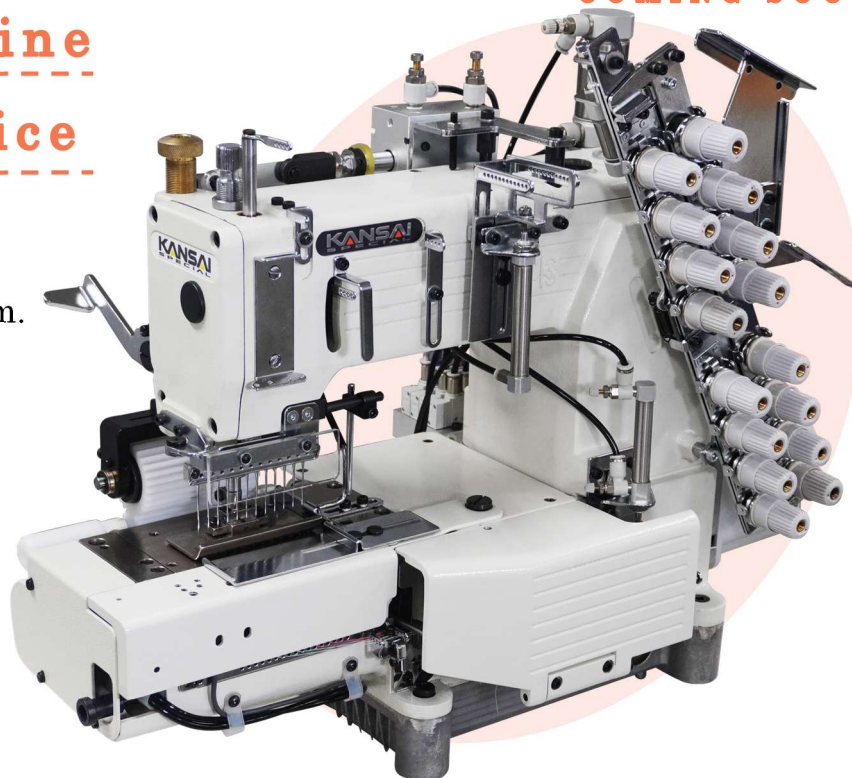
FX4412P-CD-TL3-UTC

COMING SOON!

Multi needle machine with anti-fray device

4 needle, cylinder bed, double chain stitch machine with condensed stitch mechanism and thread lock mechanism.

This model is suitable for stitching pre-closed elastic.



Features

Anti-fray technology

CD (Condensed Stitch) function ensures tightly packed stitching, while the TL3 (Thread Lock mechanism) gently releases the upper thread to interlock with the looper thread—effectively preventing seam unraveling.



【User friendly functions】



★ RT-1A (Elastic expander device)

The knee switch allows for easy adjustment of elastic tension, significantly improving work efficiency. *option



■ Gear puller

Dual gear pullers (upper and lower) ensure smooth and reliable fabric feeding for consistent stitch quality.

Specifications	FX4412P-CD-TL3-UTC
Max. Speed	3800 rpm
Needle Type	Organ DV x57 #14
Stitch Length	7~17 stitch/inch
Presser Foot Lift	8 mm
Needle Bar Stroke	34.5 mm
Diff. Feed Ratio	N/A
Gauge Size	1/4, 5mm, 3/16
Application	Plain Seaming
Material	Light to Medium



SQ7702FB-L-TC2

Feed of the arm machine for tape attaching

2 needle, double chain stitch, feed-off-the arm machine with a differential feeding system for tape attaching.

This model is suitable for tape attaching for light to medium material such as T-shirts.



New type
presser foot



COMING SOON!

Features

Differential feed dog mechanism

This model is equipped differential feed dog system.

By adjusting the differential ratio of front and back feed dog, puckering can be reduced.



Before



After

【User friendly functions】



■ Tape cutting



■ External differential lever

This model is able to cut tape by pushing button.

★External differential lever is now available!!

Specifications	SQ7702FB-L-TC2
Max. Speed	5000 rpm
Needle Type	Organ UYx128GAS #12
Stitch Length	8~21 stitch/inch
Presser Foot Lift	8 mm
Needle Bar Stroke	31.3 mm
Diff. Feed Ratio	Front-to-back movement (ratio 0.7~1.3)
Gauge Size	1/4 inch
Application	Tape attaching
Material	Light to Medium

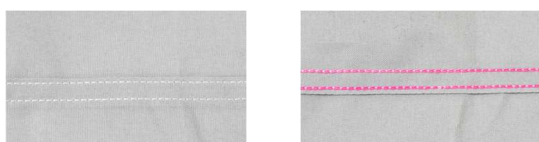


SQ7702FB-RP

Machine for lap seaming

2 needle, double chain stitch, feed-off-the-arm machine with a differential feeding system and our original belt puller.

This model is suitable for sewing lap seams on light to medium weight materials.

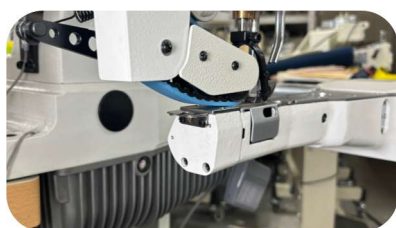


Features



KANSAI SPECIAL Original roller puller

Newly developed original puller system realizes more powerful fabric feeding. Seam portion on materials can cross stably and beautifully. The feed amount can also be adjusted easily.



■ Chain cutter

At the end of sewing, the chain can be cut off without using scissors, making it operator-friendly.



■ Differential feed mechanism

Front & back differential feed mechanism ensures prevents puckering and sewing slippage of the fabric.

Specifications	SQ7702FB-RP
Max. Speed	5000 rpm
Needle Type	Organ UYx128GAS #12
Stitch Length	8~21 stitch/inch
Presser Foot Lift	10 mm
Needle Bar Stroke	31.3 mm
Diff. Feed Ratio	Front and back movement (ratio 0.7~1.3)
Gauge Size (inch)	3/16
Application	Lap seaming
Material	Light to Medium



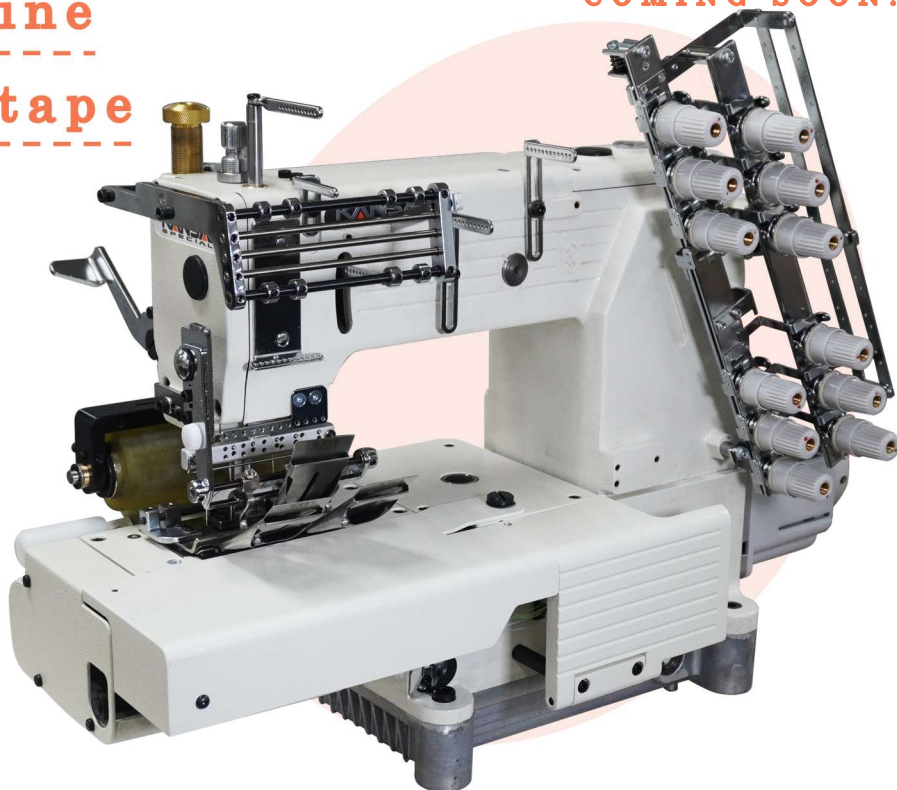
FX4406PL-AD

Multi needle machine for attaching line tape

COMING SOON!

6 needle, cylinder bed, double chain stitch machine for attaching line tapes.

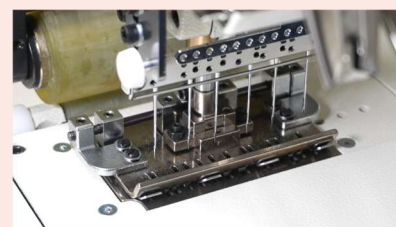
This model is suitable for attaching line tapes.



Features

Special gauge

This model supports multi-gauge configurations, enabling versatile sewing across a wide range of standards and specifications.

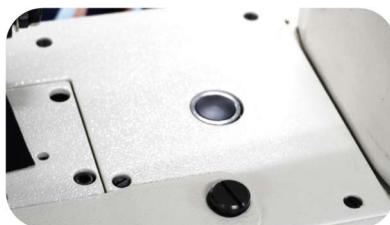


【User friendly functions】



■ Rear puller

Smooth upper and lower pullers ensure stable and consistent fabric feeding.



■ Push button

It can be changed the stitch length with the push button easily.

Specifications	FX4406PL-AD
Max. Speed	4500 rpm
Needle Type	Organ DV x57 #14
Stitch Length	7~17 stitch/inch
Presser Foot Lift	8 mm
Needle Bar Stroke	34.5 mm
Diff. Feed Ratio	N/A
Gauge Size	15-12-15-12-15
Application	Attaching line tape
Material	Light to Medium



NVK1803D

Cover stitch machine with differential feed

3 needle, high performance,
flat bed, and **top & bottom cover
stitch machine.**

This series is most suitable for knit
fabrics in order to achieve uniform,
flexible, and beautiful stitch
formation.



COMING SOON!

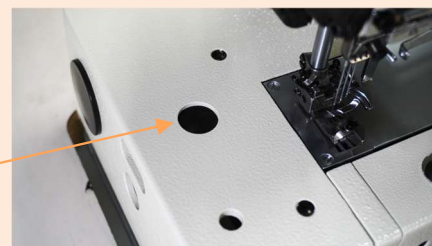


Features

Equipped with an independent needle guard

This model is equipped with an independent needle
guard.
Push button adjustment of the feed stitch eliminates
the need to adjust the needle guard, improving
operation.

Push button



【User friendly functions】



■ Differential feed



■ Prevents friction

Front and back differential feed mechanism
prevents puckering.
Silicone reduces friction and prevents thread
breakage and needle breakage.

Specifications	NVK1803D
Max. Speed	4500 rpm
Needle Type	Organ UYx128GAS #11
Stitch Length	8~16 stitch/inch
Presser Foot Lift	8 mm
Needle Bar Stroke	31 mm
Diff. Feed Ratio	Front-to-back movement (ratio 0.7~1.2)
Gauge Size (inch)	7/32
Application	Plain seaming
Material	Light to Medium



NC1001GUSJ-CD-UTAB

Chain stitch machine for three ply hemming

1 needle, ultra small cylinder bed, double chain stitch machine for jeans hemming.

The upper and lower pullers at the rear firmly grasp the fabric and feed it powerfully.

We offer a wide variety of devices, including thread trimmers, and condensed mechanisms.

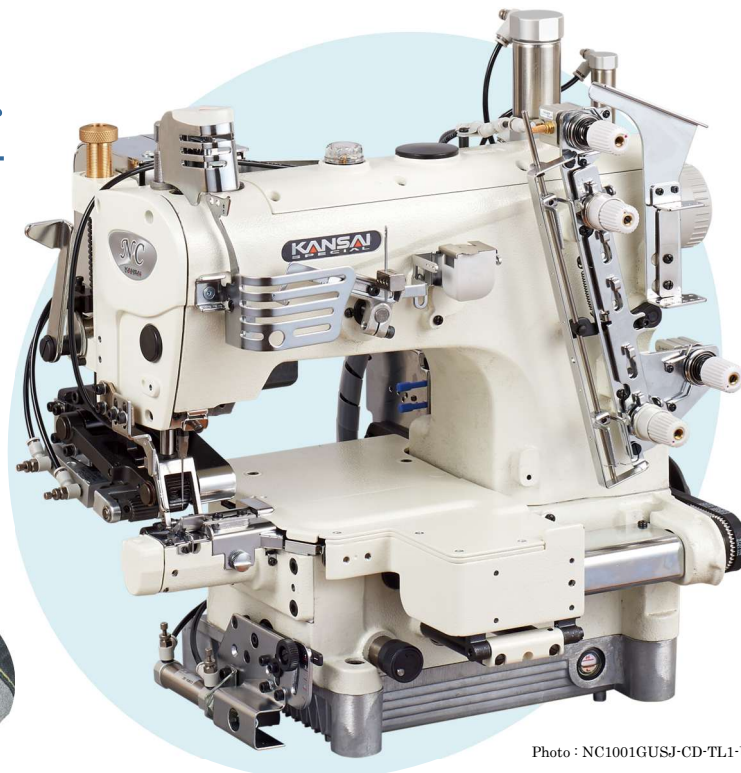


Photo : NC1001GUSJ-CD-TL1-UTAB

Features



■ Small cylinder bed

The ultra small cylinder bed (circumference **145mm**) makes it easy to sew.



■ Fabric guide

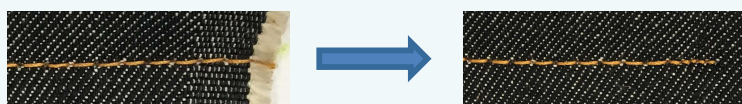
It helps to form triple plies and ensures a neat finished stitch.



■ Rear puller

The rear puller feeds to overcome joining parts easily and stably, prevents seam jamming.

Condensed mechanism



Condensed stitch make small stitches at the end of sewing and become difficult to fray.
It can be operated by pressing the pedal backward.

Specifications	NC1001GUSJ-CD-UTAB
Max. Speed	2500 rpm
Needle Type	Organ TVx5 #18
Stitch Length	6~11 stitch/ inch
Presser Foot Lift	8 mm
Needle Bar Stroke	34 mm
Diff. Feed Ratio	N/A
Gauge Size	-
Application	Three ply hemming
Material	Heavy



NL5803GBP

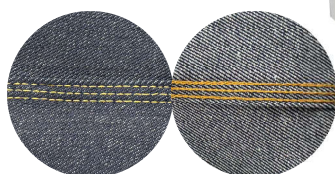
Chain stitch Machine with belt puller

COMING SOON!

3 needle, flat bed, double chain stitch machine for lap seaming.

This model uses Kansai Special's original belt puller.

It is suitable for lap seaming on medium to heavy materials.



Features

KANSAI SPECIAL original belt puller

The original puller allows for powerful fabric feeding.

The two rollers firmly feed the fabric, allowing it to easily overcome the stepped parts of thick fabrics.



【User friendly functions】



■ Guide folder

It helps to form triple plies and ensures a neat finished stitch.



■ Puller pressure adjustment

The regulator adjusts the pressure of the puller with a cylinder.

Specifications	NL5803GBP
Max. Speed	4500 rpm
Needle Type	Organ TVx5 #18
Stitch Length	6~14 stitch/inch
Presser Foot Lift	8 mm
Needle Bar Stroke	34 mm
Diff. Feed Ratio	N/A
Gauge Size	1/4 inch
Application	Lap seaming
Material	Medium to Heavy



SQ7803LR-PDX

Machine for lap seaming

COMING SOON!

3 needle, double chain stitch, feed-off-the-arm machine with a differential feeding system and our original belt puller.

This model is suitable for lap seam, yoke seam and inseam on heavy duty such as jeans and working pants.

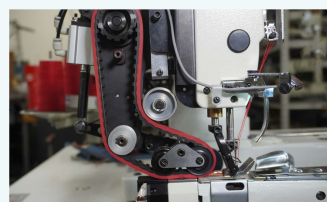
★ The sensor detects the thickness of the material and controls the speed, presser foot, and puller pressure.



Features

KANSAI SPECIAL Original belt puller

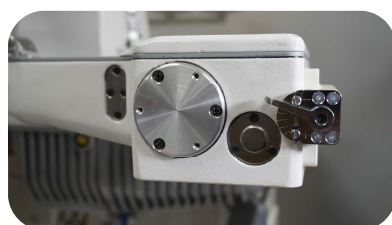
Newly developed original puller system realizes more powerful fabric feeding. The cross point of crotch seam and yoke seam can be sewn stably. The feed amount can also be adjusted easily.



Before

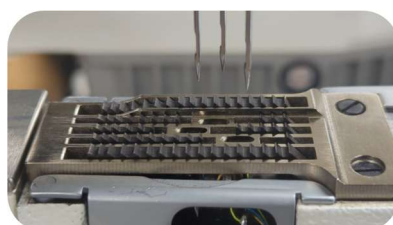


After



External differential lever

The differential adjustment has been changed to a lever type, making it easier to adjust.



Differential feed mechanism

Left & right differential feed mechanism prevents from puckering.

Specifications	SQ7803LR-PDX
Max. Speed	5000 rpm
Needle Type	Organ TVx5 #22
Stitch Length	6~12 stitch/inch
Presser Foot Lift	10 mm
Needle Bar Stroke	35 mm
Diff. Feed Ratio	Left and right movement (ratio 0.7~1.3)
Gauge Size	1/4
Application	Lap seaming
Material	Heavy

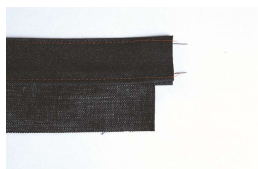


WFB5509PA-4WAC

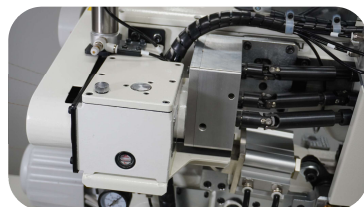
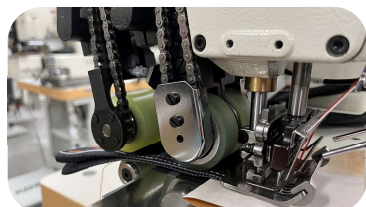
Automatic waist banding machine

4 needle, cylinder bed, double chain stitch machine with needle feed mechanism for waist banding.

The needle feed amounts can be adjusted with the lower feed dog at the same time by push button.



Features



★ Original puller mechanism

Our own puller mechanism is used to drive the puller.

- Reliable fabric feeding and cutting achieved by independent front, rear, left and right pullers
- Revised drive mechanism reduces overrun



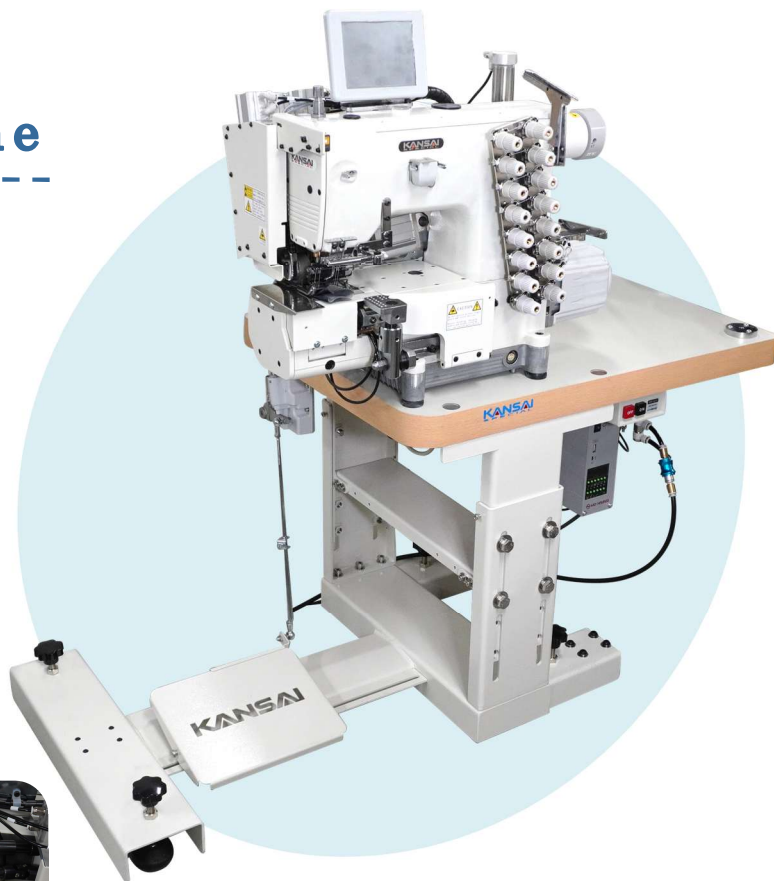
■ Touch screen

In addition to turning the automatic mode on and off, you can easily adjust waist bands cutting distance and other things.



■ Auto skip stitch

The sensor detects the edge of fabric, then the machine automatically skip stitch and cut the fabric.



Small distance



The original gauge with a needle width of 1/8 allows for a variety of sewing styles.
Total 44.5 mm as max.

1/8-1/8-1/8-1/8-7/8-1/8-1/8-1/8

Specifications	WFB5509PA-4WAC
Max. Speed	3000 rpm
Needle Type	Organ DVx57 #21
Stitch Length	4~12 stitch/inch
Presser Foot Lift	9 mm
Needle Bar Stroke	32 mm
Diff. Feed Ratio	-
Gauge Size	1/8-1/8-1/8-1/8-7/8-1/8-1/8-1/8 inch
Application	Waist banding
Material	Heavy



NW2202GPC-BK30

Belt loop Making machine

2 needle, flat bed, bottom cover stitch, belt loop making machine with puller.

It is a model which has further improvements compared with B2000C.



Feature

Knives alignment is easier, and the finished loop width is 8~20mm, which can be used for a wide range of products.

The knives adjustment dial mechanism allows the spring pressure of the left and right scalpels to be adjusted uniformly.



■ BK30 : Belt loop cutter



The belt loop length is automatically maintained and cutting continues according to the set number of stitches.

Specifications	NW2202GPC-BK30
Max. Speed	1000 rpm
Needle Type	Organ UYx128GAS #14 (Gauge1/4, 1/4W #16)
Stitch Length	6~12 stitch/inch
Presser Foot Lift	8 mm
Needle Bar Stroke	31 mm
Diff. Feed Ratio	N/A
Gauge Size	3/16, 7/32, 1/4, 1/4W inch
Application	Belt loop
Material	Medium to Heavy



NR9803GALK-ABH-4

AUTOMATIC

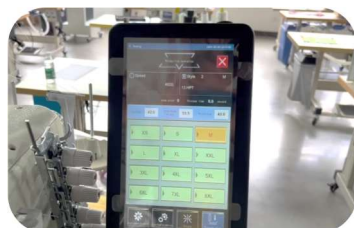
T-shirt bottom Hemming machine

2 or 3 needle, high performance, cylinder bed, bottom cover stitch machine. This model is equipped left knife and thread trimmer.

It is suitable for hemming of T-shirts etc.

Simply insert the fabric and the device will detect the size automatically and keep the same tension. It can achieve beautiful stitch formation and produce products of stable quality.

Features



■ Panel operation

Once you select the size from the touch screen, it sew automatically. It has auto identification, auto start-stop, and thread trim.



■ Alignment

The control device ensures the both side seam into the same seam direction.



■ Sensor control

Various sensors are used to control the sewing precisely.



■ Easy to operate

Operator does not need sewing skills. Only just set the fabric.



Karitorun
※Option



OPTION

ST (Stacker)

Automatically removes fabric, improving productivity.



Specifications	NR9803GALK-ABH-4
Max. Speed	4000 rpm
Needle Type	Organ UYx128GAS #11
Stitch Length	6~16 stitch/inch
Presser Foot Lift	6 mm
Needle Bar Stroke	33 mm
Diff. Feed Ratio	Front-to-back movement (ratio 0.3~0.9)
Gauge Size	7/32 , 1/4 inch
Application	Bottom hemming
Material	Light to Medium



JJT5014GH-01M-2x4-ARB-3

AUTOMATIC

Rib attaching sewing machine

2 needle, 4 thread, cylinder bed, automatic overlock machine for neck rib attach of T-shirts with upper feeding mechanism and chain cutter.

This machine is good for sewing the neck rib of the T-shirts.



Now available in baby sizes!!

Karitorun
※Option

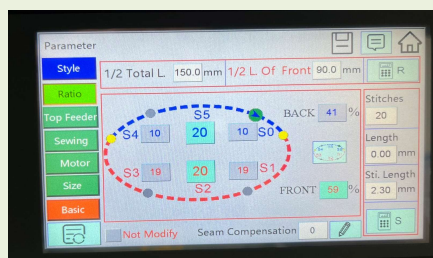


Feature

Easy automatic function

Top feed mechanism can change feed amount while sewing corner parts automatically.

Feed rate can operate by touch panel. This function provides a beautiful finish.



Specifications	JJT5014GH-01M-2x4-ARB-3
Max. Speed	4000 rpm
Needle Type	Organ DCx27 #9
Stitch Length	1~3.8 mm
Presser Foot Lift	5.5 mm
Needle Bar Stroke	24.4 mm
Diff. Feed Ratio	Front and back movement (ratio 0.8~1.8)
Gauge Size	2mm x 4mm
Application	Attaching the neck part
Material	Light to Medium



JJ3014GH-01M-2x4-ASG-2

Semi-automatic serging machine

2 needle, 4 thread, semi-automatic, serging machine.

In this model, two sensors detect the starting edge and ending edge of a fabric to enable automatic sewing and thread cutting.

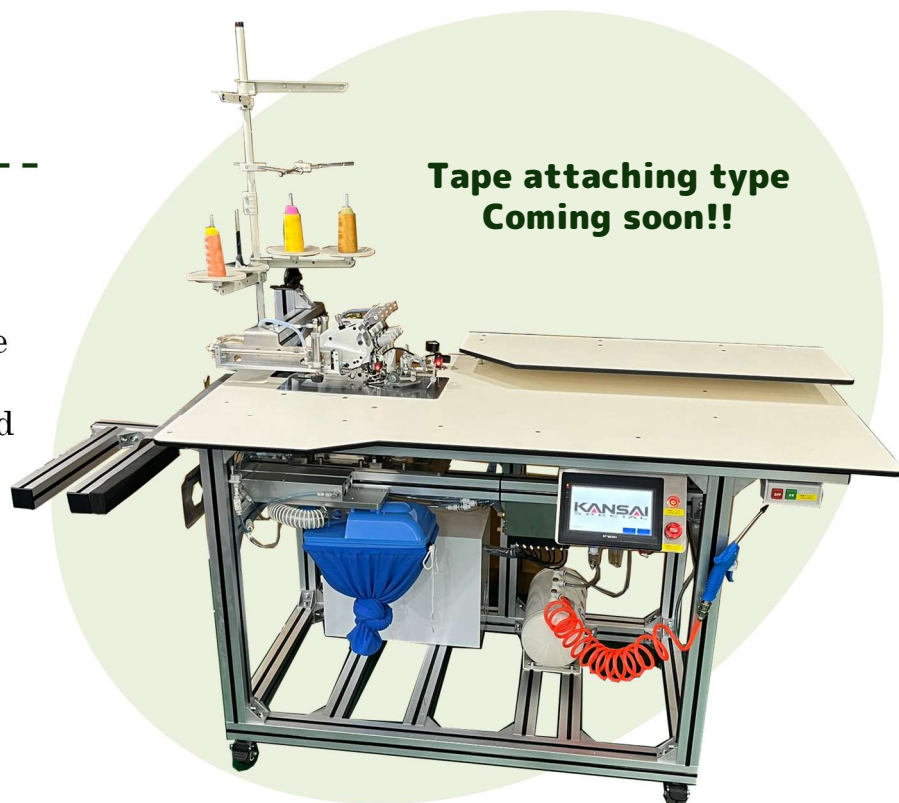


Feature

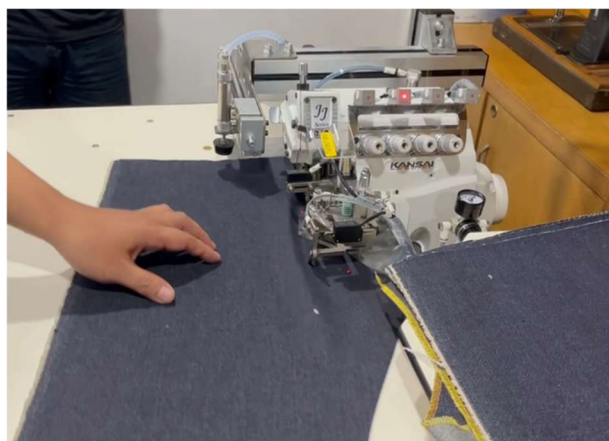
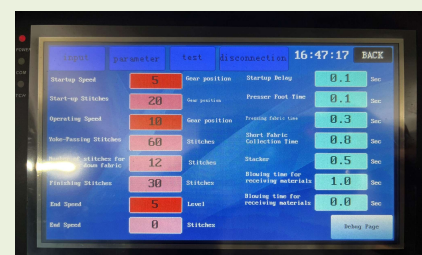
Semi-automatic function

Operation settings, such as the speed after the sensor detects the fabric, can be easily changed from the LCD screen.

The workload of the operator is greatly reduced.



**Tape attaching type
Coming soon!!**



Specifications	JJ3014GH-01M-2x4-ASG-2
Max. Speed	5000 rpm
Needle Type	Organ DCx27 #14
Stitch Length	1~3.8 mm
Presser Foot Lift	5.5 mm
Needle Bar Stroke	24.4 mm
Diff. Feed Ratio	Front and back movement (ratio 0.8~1.8)
Gauge Size	2mm x 4mm
Application	Serging
Material	Light to Medium



NR9803GPEHK-AHK-3

AUTOMATIC

Attaching elastic automatic machine

3-needle, cylinder bed, bottom cover stitch automatic machine for attaching elastic band for men's briefs.

Simply insert the fabric and the device will detect the size and automatically apply tension.

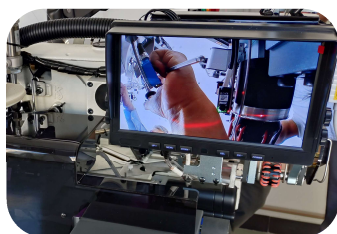
It is uniform and supple, and can achieve beautiful stitch formation and produce products of stable quality.

Features



■ Panel operation

Once initial settings are made on the Touch screen, stable, continuous sewing is possible.



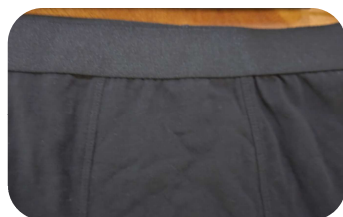
■ Check monitor

Sewing errors are reduced through visual inspection on a monitor and laser checks.



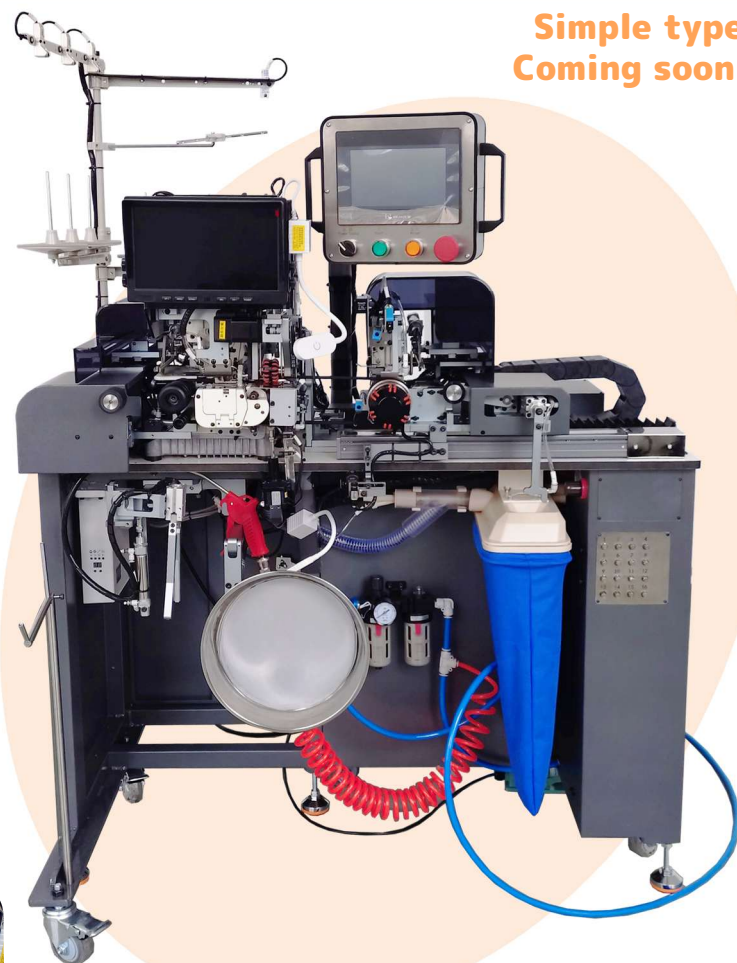
■ Sensor control

Various sensors are used to precisely control the sewing.



■ Easy to operate

Sewing manufacturers don't need difficult skills just to put in the fabric.



Simple type
Coming soon!!

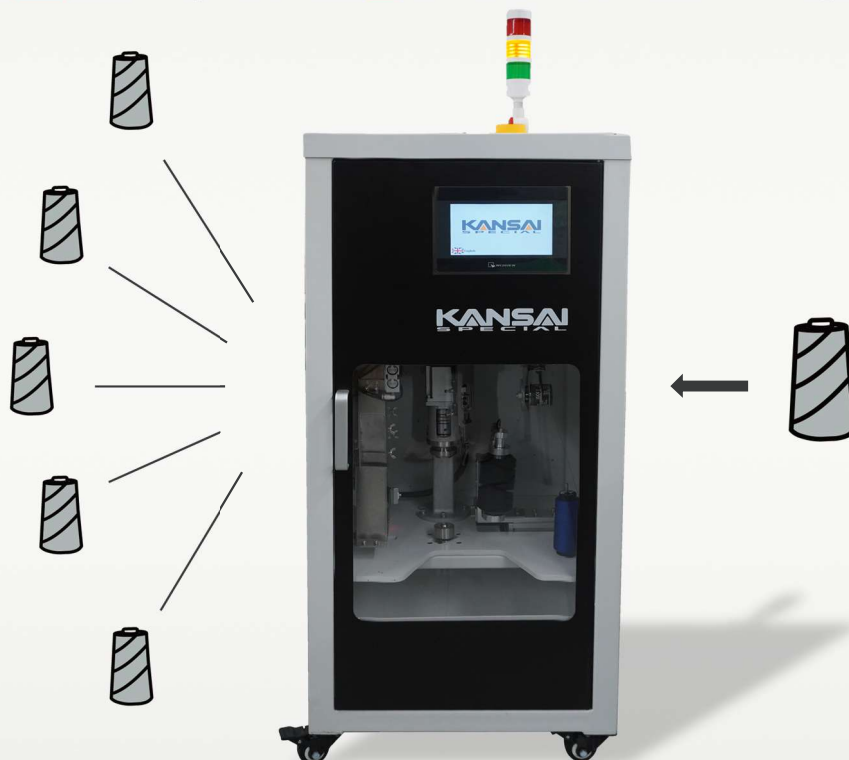


Specifications	NR9803GPEHK-AHK-3
Max. Speed	4000 rpm
Needle Type	Organ UYx128GAS #11
Stitch Length	6~16 stitch/inch
Presser Foot Lift	6 mm
Needle Bar Stroke	33 mm
Diff. Feed Ratio	Front-to-back movement (ratio 0.3~2.9)
Gauge Size	7/32, 1/4 inch
Application	Attaching elastic
Material	Light to Medium



Makitron

Oh!
Separate!



Easy operation
with touch panel



Easy to set up
Quantity of Stacked Cones
Max. : 28Pcs

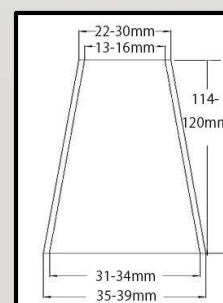


Compatible with
2 types of cones

Setting is a 2-step!

1. number of wind-up meters
 2. number of wind-up cones
- and **GO!!**

Example :
When dividing into 10 cones of 100m
→→ Running time 15 minute
Once started,
no more action!



Karitorun

選べる2つのタイプ
Choose from 2 types

ハンディタイプ
Handy Type

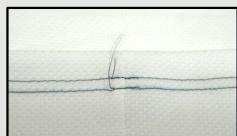


取り付けタイプ
Mounting Type

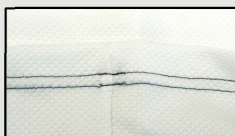


シンプルタイプ登場
Without the main
vacuum unit is available

Before



After



スペアパーツ
同梱済み
Spare parts
included



- ・面倒な多本針の縫製後の糸処理も、バリカンで素早くカット
- ・センサーが生地を感知し、近づけるだけで自動起動
- ・ネジで調整することで、カットする糸の長さを変更可能
- ・糸くずのお手入れが簡単で、メンテナンスの手間が軽減

- ・ The clippers can quickly cut off the threads after sewing with multiple needles, which can be a hassle.
- ・ Just bring it close and it starts automatically. The sensor detects the fabric.
- ・ The length of the thread to be cut can be changed by adjusting the screw.
- ・ Easy to clean up lint, reducing the maintenance effort.

その他同梱品
Other included items



MEMO



1-4-17, SUNA SHIJOHNAWATE-CITY, OSAKA 575-0001, JAPAN
TEL : +81-72-877-1221 FAX : +81-72-878-9649 E-MAIL : hqeigyo@kansai-special.com
URL: www.kansai-special.com

FOREIGN AFFILIATED COMPANIES

KANSAI SPECIAL AMERICAN MACHINE CORP.
476 HAMPSHIRE DR., GAFFNEY, SC 29341 U.S.A.
TEL: +1-973-470-8321 FAX: 973-470-8539 E-MAIL: ksam@kansaispecial.net

KANSAI SPECIAL EUROPE GMBH
QUIRINSTR.19, 40545 DUSSELDORF, GERMANY
TEL : +49-211-577-9090 FAX : +49-211-558-1477 E-MAIL : Contact@kansai-special.de

MORIMOTO SINGAPORE PTE LTD.
51 PENJURU ROAD, #02-02 SINGAPORE 609143
TEL : +65-6334-1305 FAX : +65-6334-1365 E-MAIL : info@kansaispecial.com.sg

MORIMOTO SINGAPORE PTE LTD INDIA LIAISON OFFICE
NO.11, SENTHIL NAGAR, PERIYAR COLONY, ANUPPARPALAYAM TIRUPUR, 641652
TEL : +91-421-4248229 FAX : +91-421-4248228 E-MAIL : india@kansaispecial.com.sg

MORIMOTO SINGAPORE PTE LTD BANGLADESH LIAISON OFFICE
HOUSE-09, FLAT-1/A & 1/B, ROAD-04, SECTOR-03, UTTARA, DHAKA-1230, BANGLADESH
TEL : +880- 2-8931702 FAX : +880- 2-8931704 E-MAIL : salesbangladesh@kansaispecial.com.sg

KANSAI (SHANGHAI) INDUSTRIAL SEWING MACHINE CO., LTD.
NO.55 LANE835, JIAXIN ROAD, MALU TOWN, JIADING DISTRICT, SHANGHAI 201818
TEL : +86-21-5990-1798 FAX : +86-21-5990-1538 E-MAIL : kansaish@spe.sina.net

仕様・外観等は予告なく変更されることがあります。

Specifications and appearances are subject to change without prior notice.

